

PACO51558

---

## Product Information

**Size:**

50ug

**Reactivity:**

Human

**Source:**

Rabbit

**Isotype:**

IgG

**Applications:**

ELISA, WB, IHC, IF

**Recommended dilutions:**

ELISA:1:2000-1:10000, WB:1:200-1:5000,  
IHC:1:20-1:200, IF:1:50-1:200

**Protein Background:**

Cleaves beta-linked terminal galactosyl residues from gangliosides, glycoproteins, and glycosaminoglycans.

**Gene ID:**

GLB1

**Uniprot**

P16278

**Synonyms:**

Beta-galactosidase (EC 3.2.1.23) (acid, beta-galactosidase) (Lactase) (Elastin receptor 1),  
GLB1, ELNR1

**Immunogen:**

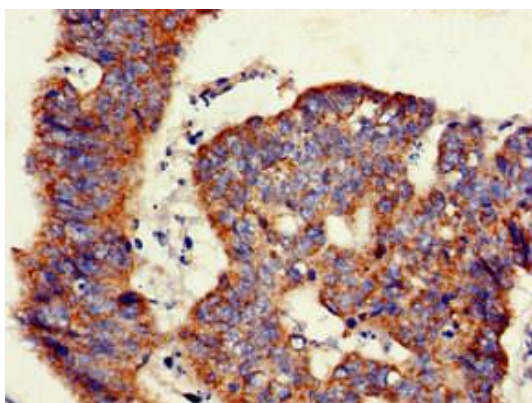
Recombinant Human Beta-galactosidase protein (317-455AA).

**Storage:**

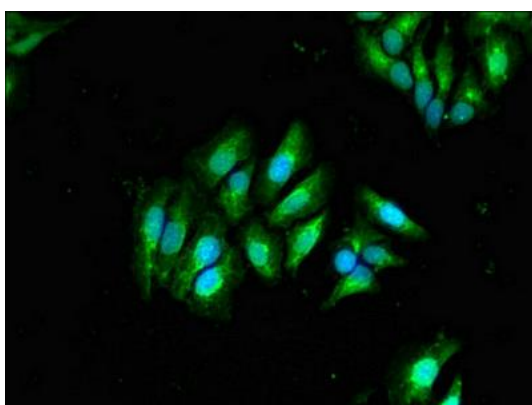
Preservative: 0.03% Proclin 300. Constituents: 50% Glycerol, 0.01M PBS, pH 7.4

## Product Images

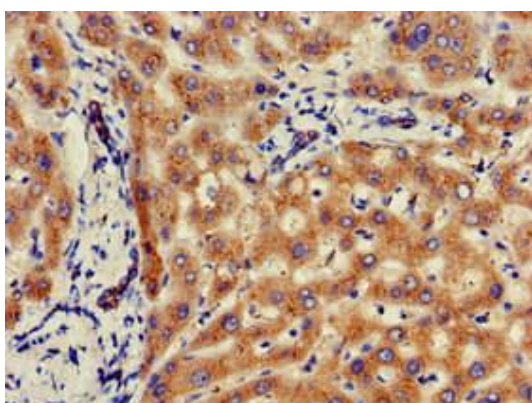
---



Immunohistochemistry of paraffin-embedded human colon cancer using PACO51558 at dilution of 1:100.



Immunofluorescent analysis of HeLa cells using PACO51558 at dilution of 1:100 and Alexa Fluor 488-conjugated AffiniPure Goat Anti-Rabbit IgG(H+L).



Immunohistochemistry of paraffin-embedded human liver tissue using PACO51558 at dilution of 1:100.