

Product Information

Size:

50ug

Reactivity:

Human, Mouse

Source:

Rabbit

Isotype:

IgG

Applications:

ELISA, WB, IHC, IF

Recommended dilutions:

ELISA:1:2000-1:10000, WB:1:500-1:5000,
IHC:1:20-1:200, IF:1:50-1:200

Protein Background:

GTPase-activating protein for the ADP ribosylation factor family. May serve as a scaffold to bring together molecules to form signaling modules controlling vesicle trafficking, adhesion and cytoskeletal organization. Increases the speed of cell migration, as well as the size and rate of formation of protrusions, possibly by targeting PAK1 to adhesions and the leading edge of lamellipodia. Sequesters inactive non-tyrosine-phosphorylated paxillin in cytoplasmic complexes. Involved in the regulation of cytokinesis; the function may involve SDCCAG3 and PTPN13.

Gene ID:

GIT1

Uniprot

Q9Y2X7

Synonyms:

ARF GTPase-activating protein GIT1 (ARF GAP GIT1) (Cool-associated and tyrosine-phosphorylated protein 1) (CAT-1) (CAT1) (G protein-coupled receptor kinase-interactor 1) (GRK-interacting protein 1), GIT1

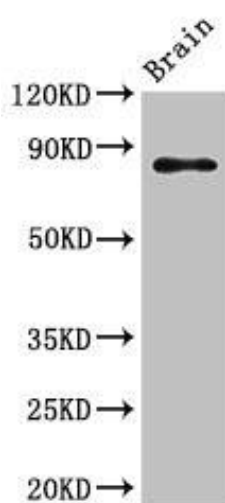
Immunogen:

Recombinant Human ARF GTPase-activating protein GIT1 protein (470-642AA).

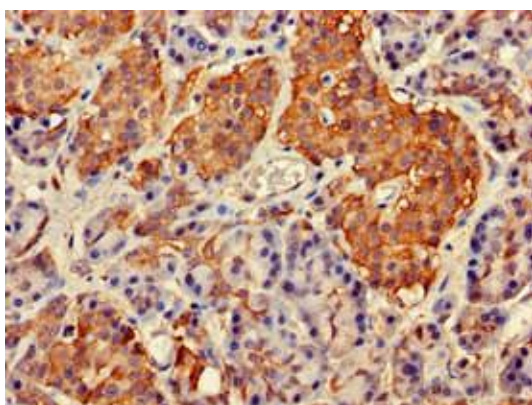
Storage:

Preservative: 0.03% Proclin 300. Constituents: 50% Glycerol, 0.01M PBS, pH 7.4

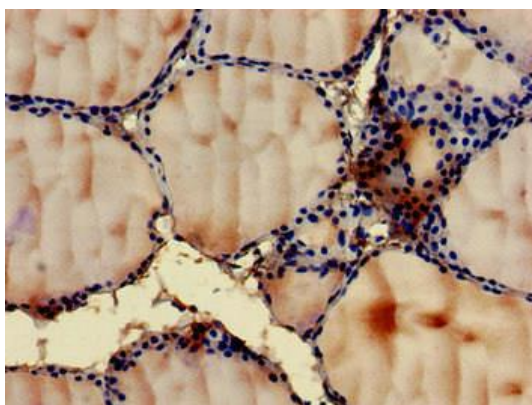
Product Images



Western Blot. Positive WB detected in: Mouse brain tissue. All lanes: GIT1 antibody at 3.5 μ g/ml. Secondary: Goat polyclonal to rabbit IgG at 1/50000 dilution. Predicted band size: 85, 20, 86 kDa. Observed band size: 85 kDa.



Immunohistochemistry of paraffin-embedded human pancreatic tissue using PACO51550 at dilution of 1:100.



Immunohistochemistry of paraffin-embedded human thyroid tissue using PACO51550 at dilution of 1:100.