

# GIPC1 Antibody



PACO51546

---

## Product Information

**Size:**

50ug

**Reactivity:**

Human

**Source:**

Rabbit

**Isotype:**

IgG

**Applications:**

ELISA, IHC, IF

**Recommended dilutions:**

ELISA:1:2000-1:10000, IHC:1:20-1:200,  
IF:1:50-1:200

**Protein Background:**

May be involved in G protein-linked signaling.

**Gene ID:**

GIPC1

**Uniprot**

O14908

**Synonyms:**

PDZ domain-containing protein GIPC1 (GAIP C-terminus-interacting protein) (RGS-GAIP-interacting protein) (RGS19-interacting protein 1) (Synectin) (Tax interaction protein 2) (TIP-2), GIPC1, C19orf3 GIPC RGS19IP1

**Immunogen:**

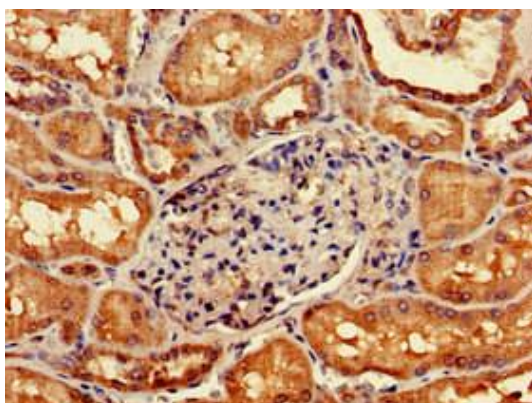
Recombinant Human PDZ domain-containing protein GIPC1 protein (7-74AA).

**Storage:**

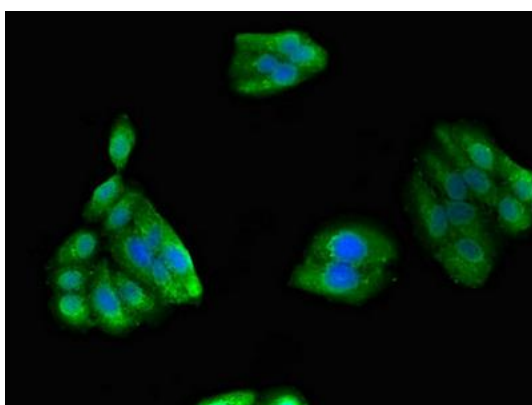
Preservative: 0.03% Proclin 300. Constituents: 50% Glycerol, 0.01M PBS, pH 7.4

## Product Images

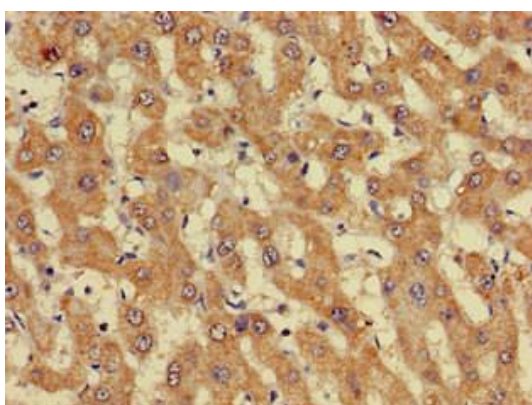
---



Immunohistochemistry of paraffin-embedded human kidney tissue using PACO51546 at dilution of 1:100.



Immunofluorescent analysis of HepG2 cells using PACO51546 at dilution of 1:100 and Alexa Fluor 488-conjugated AffiniPure Goat Anti-Rabbit IgG(H+L).



Immunohistochemistry of paraffin-embedded human liver cancer using PACO51546 at dilution of 1:100.