

PACO51434

Product Information

Size:

50ug

Reactivity:

Human, Mouse, Rat

Source:

Rabbit

Isotype:

IgG

Applications:

ELISA, WB, IHC

Recommended dilutions:

ELISA:1:2000-1:10000, WB:1:200-1:3000,
IHC:1:20-1:200

Protein Background:

Binds to membranes enriched in phosphatidylinositol 4,5-bisphosphate (PtdIns(4,5)P₂). May have a role in transport via clathrin-coated vesicles from the trans-Golgi network to endosomes. Stimulates clathrin assembly.

Gene ID:

CLINT1

Uniprot

Q14677

Synonyms:

Clathrin interactor 1 (Clathrin-interacting protein localized in the trans-Golgi region) (Clint) (Enthoprotin) (Epsin-4) (Epsin-related protein) (EpsinR), CLINT1, ENTH EPN4 EPNR KIAA0171

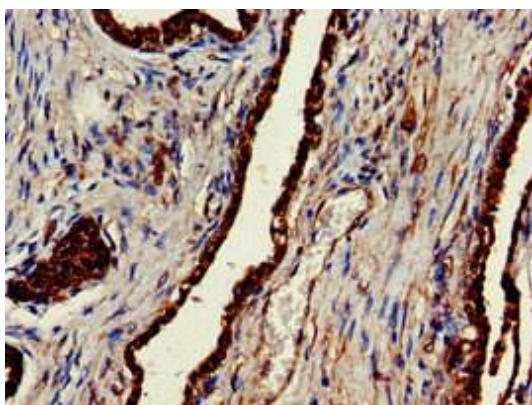
Immunogen:

Recombinant Human Clathrin interactor 1 protein (1-625AA).

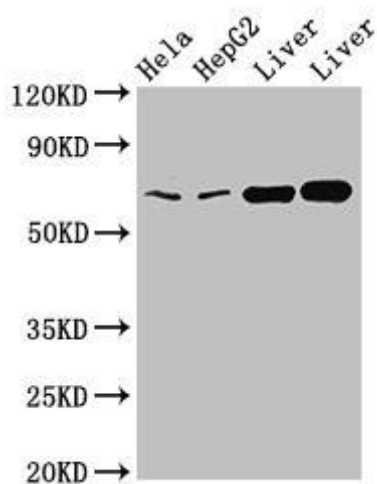
Storage:

Preservative: 0.03% Proclin 300. Constituents: 50% Glycerol, 0.01M PBS, pH 7.4

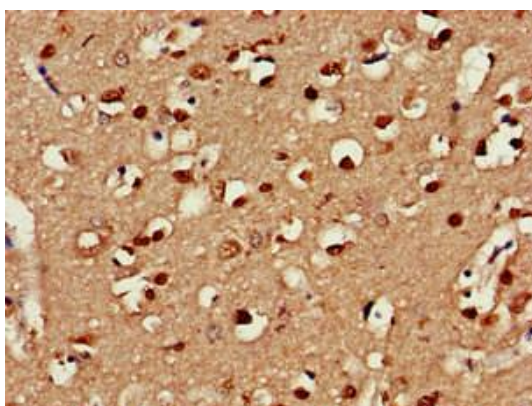
Product Images



Immunohistochemistry of paraffin-embedded human prostate cancer using PACO51434 at dilution of 1:100.



Western Blot. Positive WB detected in: HeLa whole cell lysate, HepG2 whole cell lysate, Rat liver tissue, Mouse liver tissue. All lanes: CLINT1 antibody at 2 μ g/ml. Secondary. Goat polyclonal to rabbit IgG at 1/50000 dilution. Predicted band size: 69, 71 kDa. Observed band size: 69 kDa.



Immunohistochemistry of paraffin-embedded human brain tissue using PACO51434 at dilution of 1:100.