

PACO51414

Product Information

Size:

50ug

Reactivity:

Human

Source:

Rabbit

Isotype:

IgG

Applications:

ELISA, IHC, IF

Recommended dilutions:

ELISA:1:2000-1:10000, IHC:1:20-1:200,
IF:1:50-1:200

Protein Background:

extracellular space, integral component of plasma membrane, plasma membrane, cell-cell signaling, leukocyte migration, signal transduction.

Gene ID:

CEACAM6

Uniprot

P40199

Synonyms:

Carcinoembryonic antigen-related cell adhesion molecule 6 (Non-specific crossreacting antigen) (Normal cross-reacting antigen) (CD antigen CD66c), CEACAM6, NCA

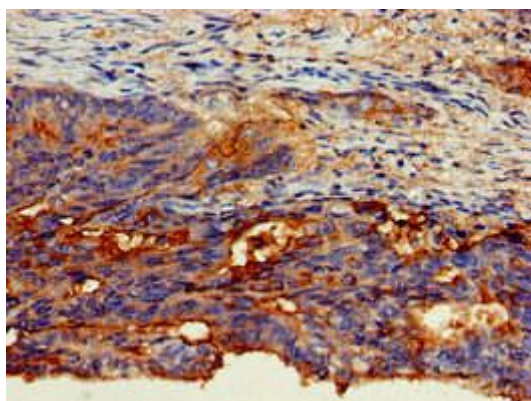
Immunogen:

Recombinant Human Carcinoembryonic antigen-related cell adhesion molecule 6 protein (35-320AA).

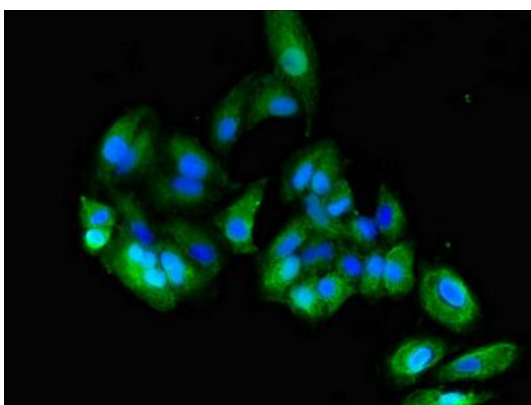
Storage:

Preservative: 0.03% Proclin 300. Constituents: 50% Glycerol, 0.01M PBS, pH 7.4

Product Images



Immunohistochemistry of paraffin-embedded human colon cancer using PACO51414 at dilution of 1:100.



Immunofluorescent analysis of HepG2 cells using PACO51414 at dilution of 1:100 and Alexa Fluor 488-conjugated AffiniPure Goat Anti-Rabbit IgG(H+L).