

# CDH11 Antibody



PACO51406

---

## Product Information

**Size:**

50ug

**Reactivity:**

Human

**Source:**

Rabbit

**Isotype:**

IgG

**Applications:**

ELISA, IHC, IF

**Recommended dilutions:**

ELISA:1:2000-1:10000, IHC:1:20-1:200,  
IF:1:50-1:200

**Protein Background:**

Cadherins are calcium-dependent cell adhesion proteins. They preferentially interact with themselves in a homophilic manner in connecting cells; cadherins may thus contribute to the sorting of heterogeneous cell types.

**Gene ID:**

CDH11

**Uniprot**

P55287

**Synonyms:**

Cadherin-11 (OSF-4) (Osteoblast cadherin) (OB-cadherin), CDH11

**Immunogen:**

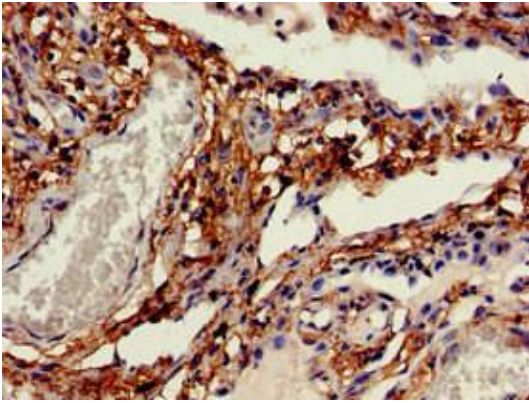
Recombinant Human Cadherin-11 protein (637-796AA).

**Storage:**

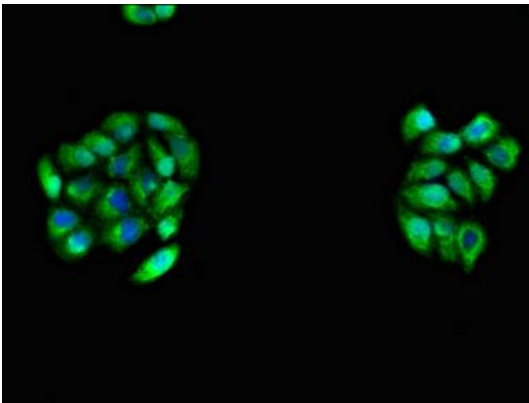
Preservative: 0.03% Proclin 300. Constituents: 50% Glycerol, 0.01M PBS, pH 7.4

## Product Images

---



Immunohistochemistry of paraffin-embedded human lung cancer using PACO51406 at dilution of 1:100.



Immunofluorescent analysis of PC-3 cells using PACO51406 at dilution of 1:100 and Alexa Fluor 488-conjugated AffiniPure Goat Anti-Rabbit IgG(H+L).