

# CAPN1 Antibody



PACO51382

---

## Product Information

**Size:**

50ug

**Reactivity:**

Human

**Source:**

Rabbit

**Isotype:**

IgG

**Applications:**

ELISA, WB, IHC

**Recommended dilutions:**

ELISA:1:2000-1:10000, WB:1:500-1:5000,  
IHC:1:20-1:200

**Protein Background:**

Calcium-regulated non-lysosomal thiol-protease which catalyze limited proteolysis of substrates involved in cytoskeletal remodeling and signal transduction.

**Gene ID:**

CAPN1

**Uniprot**

P07384

**Synonyms:**

Calpain-1 catalytic subunit (EC 3.4.22.52) (Calcium-activated neutral proteinase 1) (CANP 1) (Calpain mu-type) (Calpain-1 large subunit) (Cell proliferation-inducing gene 30 protein) (Micromolar-calpain) (muCANP), CAPN1, CANPL1

**Immunogen:**

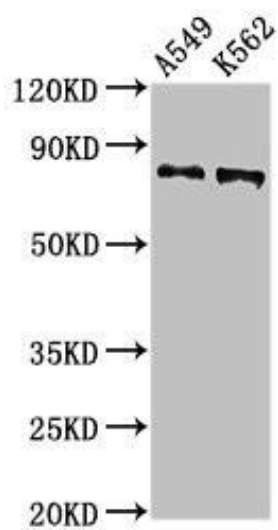
Recombinant Human Calpain-1 catalytic subunit protein (1-714AA).

**Storage:**

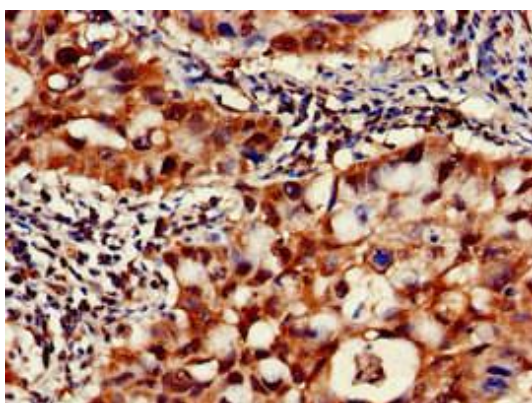
Preservative: 0.03% Proclin 300. Constituents: 50% Glycerol, 0.01M PBS, pH 7.4

## Product Images

---



Western Blot. Positive WB detected in: A549 whole cell lysate, K562 whole cell lysate. All lanes: CAPN1 antibody at 2.7 $\mu$ g/ml. Secondary. Goat polyclonal to rabbit IgG at 1/50000 dilution. Predicted band size: 82 kDa. Observed band size: 82 kDa.



Immunohistochemistry of paraffin-embedded human lung cancer using PACO51382 at dilution of 1:100.