

Product Information

Size:

50ug

Reactivity:

Human, Mouse, Rat

Source:

Rabbit

Isotype:

IgG

Applications:

ELISA, WB, IHC, IF

Recommended dilutions:

ELISA:1:2000-1:10000, WB:1:200-1:5000,
IHC:1:20-1:200, IF:1:50-1:200

Protein Background:

Involved in the cell-cell adhesion. Has both calcium-independent homophilic cell-cell adhesion activity and calcium-independent heterophilic cell-cell adhesion activity with IGSF4, NECTIN1 and NECTIN3. Interaction with EPB41L1 may regulate structure or function of cell-cell junctions.

Gene ID:

CADM3

Uniprot

Q8N126

Synonyms:

Cell adhesion molecule 3 (Brain immunoglobulin receptor) (Immunoglobulin superfamily member 4B) (IgSF4B) (Nectin-like protein 1) (NECL-1) (Synaptic cell adhesion molecule 3) (SynCAM3) (TSLC1-like protein 1) (TSL1), CADM3, IGSF4B NECL1 SYNCAM3 TSL1

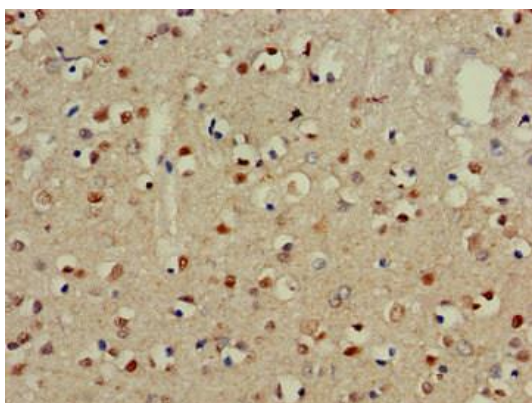
Immunogen:

Recombinant Human Cell adhesion molecule 3 protein (140-328AA).

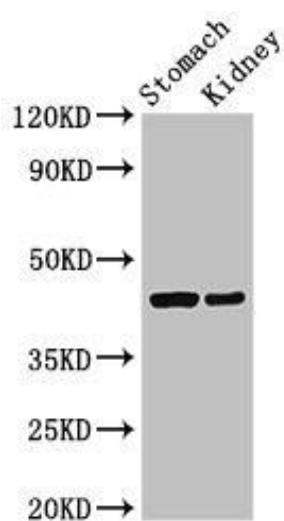
Storage:

Preservative: 0.03% Proclin 300. Constituents: 50% Glycerol, 0.01M PBS, pH 7.4

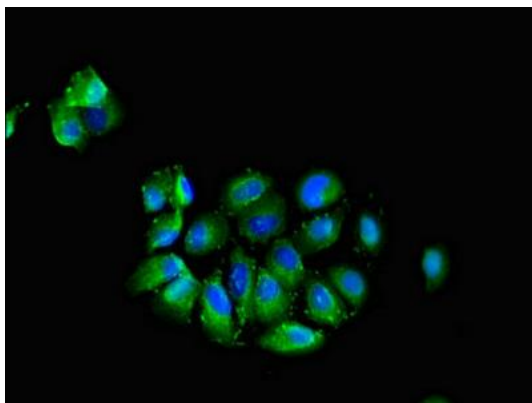
Product Images



Immunohistochemistry of paraffin-embedded human brain tissue using PACO51378 at dilution of 1:100.



Western Blot. Positive WB detected in: Rat stomach tissue, Mouse kidney tissue. All lanes: CADM3 antibody at 3 μ g/ml. Secondary. Goat polyclonal to rabbit IgG at 1/50000 dilution. Predicted band size: 44, 48, 39 kDa. Observed band size: 44 kDa.



Immunofluorescent analysis of A549 cells using PACO51378 at dilution of 1:100 and Alexa Fluor 488-conjugated AffiniPure Goat Anti-Rabbit IgG(H+L).