

CCZ1 Antibody



PACO51366

Product Information

Size:

50ug

Reactivity:

Human, Rat

Source:

Rabbit

Isotype:

IgG

Applications:

ELISA, WB

Recommended dilutions:

ELISA:1:2000-1:10000, WB:1:500-1:5000

Protein Background:

Acts in concert with MON1A, as a guanine exchange factor (GEF) for RAB7, promotes the exchange of GDP to GTP, converting it from an inactive GDP-bound form into an active GTP-bound form.

Gene ID:

CCZ1

Uniprot

P86791

Synonyms:

Vacuolar fusion protein CCZ1 homolog, CCZ1, C7orf28A

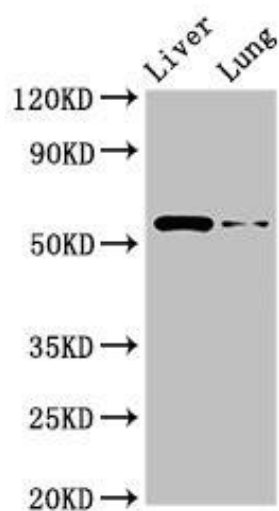
Immunogen:

Recombinant Human Vacuolar fusion protein CCZ1 homolog protein (201-482AA).

Storage:

Preservative: 0.03% Proclin 300. Constituents: 50% Glycerol, 0.01M PBS, pH 7.4

Product Images



Western Blot. Positive WB detected in: Rat liver tissue, Rat lung tissue. All lanes: CCZ1 antibody at 2.5 μ g/ml. Secondary. Goat polyclonal to rabbit IgG at 1/50000 dilution. Predicted band size: 56 kDa. Observed band size: 56 kDa.