

ATP9A Antibody



PACO51338

Product Information

Size:

50ug

Reactivity:

Human

Source:

Rabbit

Isotype:

IgG

Applications:

ELISA, WB, IHC, IF

Recommended dilutions:

ELISA:1:2000-1:10000, WB:1:500-1:5000,
IHC:1:20-1:200, IF:1:50-1:200

Protein Background:

early endosome, perinuclear region of cytoplasm, plasma membrane, recycling endosome, trans-Golgi network, phospholipid-translocating ATPase activity, endocytosis, phospholipid translocation, retrograde vesicle-mediated transport, Golgi to ER.

Gene ID:

ATP9A

Uniprot

O75110

Synonyms:

Probable phospholipid-transporting ATPase IIA (EC 3.6.3.1) (ATPase class II type 9A), ATP9A, ATP1IA KIAA0611

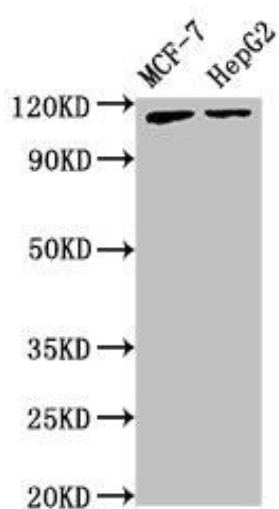
Immunogen:

Recombinant Human Probable phospholipid-transporting ATPase IIA protein (2-69AA).

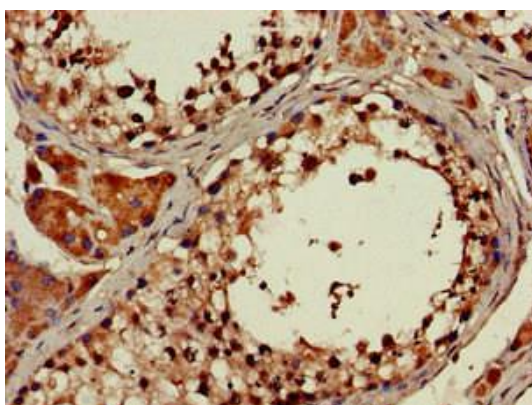
Storage:

Preservative: 0.03% Proclin 300. Constituents: 50% Glycerol, 0.01M PBS, pH 7.4

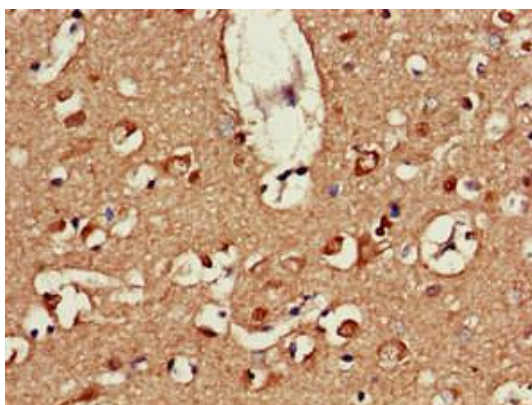
Product Images



Western Blot. Positive WB detected in: MCF-7 whole cell lysate, HepG2 whole cell lysate. All lanes: ATP9A antibody at 3.5 μ g/ml. Secondary: Goat polyclonal to rabbit IgG at 1/50000 dilution. Predicted band size: 119, 106 kDa. Observed band size: 119 kDa.



Immunohistochemistry of paraffin-embedded human testis tissue using PACO51338 at dilution of 1:100.



Immunohistochemistry of paraffin-embedded human brain tissue using PACO51338 at dilution of 1:100.