

SEC23IP Antibody



PACO51242

Product Information

Size:

50ug

Reactivity:

Human

Source:

Rabbit

Isotype:

IgG

Applications:

ELISA, WB, IHC, IF

Recommended dilutions:

ELISA:1:2000-1:10000, WB:1:500-1:5000,
IHC:1:20-1:200, IF:1:50-1:200

Protein Background:

Plays a role in the organization of endoplasmic reticulum exit sites. Specifically binds to phosphatidylinositol 3-phosphate (PI(3)P), phosphatidylinositol 4-phosphate (PI(4)P) and phosphatidylinositol 5-phosphate (PI(5)P).

Gene ID:

SEC23IP

Uniprot

Q9Y6Y8

Synonyms:

SEC23-interacting protein (p125), SEC23IP

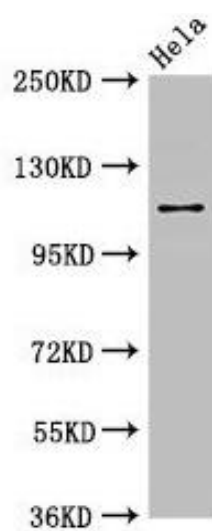
Immunogen:

Recombinant Human SEC23-interacting protein (779-989AA).

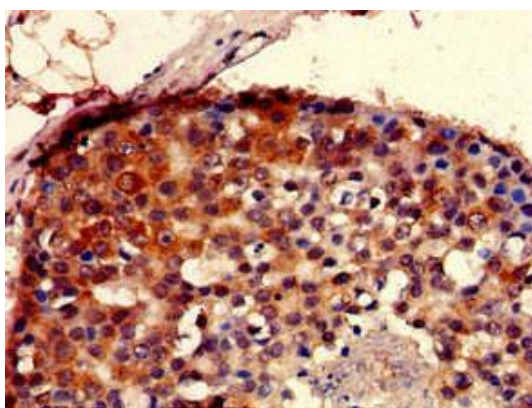
Storage:

Preservative: 0.03% Proclin 300. Constituents: 50% Glycerol, 0.01M PBS, pH 7.4

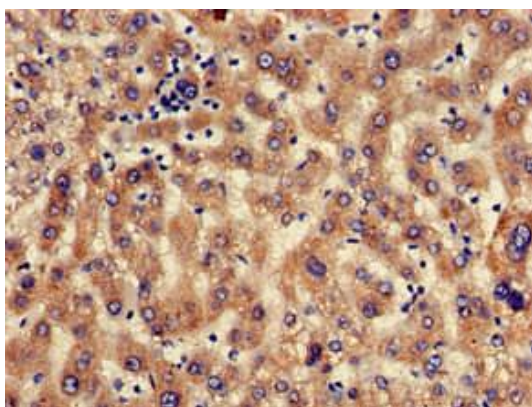
Product Images



Western Blot. Positive WB detected in: HeLa whole cell lysate. All lanes: SEC23IP antibody at 2.7 μ g/ml. Secondary: Goat polyclonal to rabbit IgG at 1/50000 dilution. Predicted band size: 112, 103 kDa. Observed band size: 112 kDa.



Immunohistochemistry of paraffin-embedded human breast cancer using PACO51242 at dilution of 1:100.



Immunohistochemistry of paraffin-embedded human liver tissue using PACO51242 at dilution of 1:100.