

PACO51234

Product Information

Size:

50ug

Reactivity:

Human

Source:

Rabbit

Isotype:

IgG

Applications:

ELISA, IHC

Recommended dilutions:

ELISA:1:2000-1:10000, IHC:1:20-1:200

Protein Background:

Functions as a component of the PCAF complex. The PCAF complex is capable of efficiently acetylating histones in a nucleosomal context. The PCAF complex could be considered as the human version of the yeast SAGA complex.

Gene ID:

TAF6L

Uniprot

Q9Y6J9

Synonyms:

TAF6-like RNA polymerase II p300/CBP-associated factor-associated factor 65 kDa subunit 6L (PCAF-associated factor 65-alpha) (PAF65-alpha), TAF6L, PAF65A

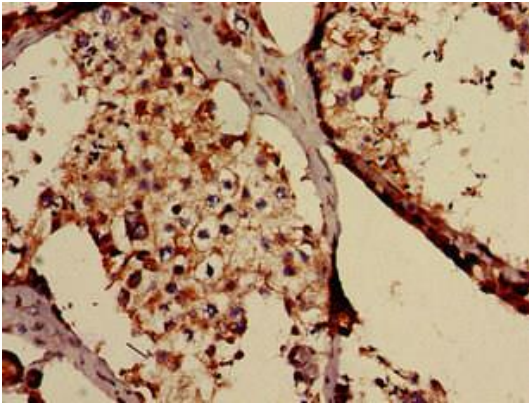
Immunogen:

Recombinant Human TAF6-like RNA polymerase II p300/CBP-associated factor-associated factor 65 kDa subunit 6L protein (345-433AA).

Storage:

Preservative: 0.03% Proclin 300. Constituents: 50% Glycerol, 0.01M PBS, pH 7.4

Product Images



Immunohistochemistry of paraffin-embedded human testis tissue using PACO51234 at dilution of 1:100.