

MAP1LC3C Antibody



PACO51138

Product Information

Size:

50ug

Reactivity:

Human

Source:

Rabbit

Isotype:

IgG

Applications:

ELISA, IHC, IF

Recommended dilutions:

ELISA:1:2000-1:10000, IHC:1:20-1:200,
IF:1:50-1:200

Protein Background:

Ubiquitin-like modifier that plays a crucial role in antibacterial autophagy (xenophagy) through the selective binding of CALCOCO2. Recruits all ATG8 family members to infecting bacteria such as *S. Typhimurium*.

Gene ID:

MAP1LC3C

Uniprot

Q9BXW4

Synonyms:

Microtubule-associated proteins 1A/1B light chain 3C (Autophagy-related protein LC3 C) (Autophagy-related ubiquitin-like modifier LC3 C) (MAP1 light chain 3-like protein 3) (MAP1A/MAP1B light chain 3 C) (MAP1A/MAP1B LC3 C) (Microtubule-associated protein 1 light chain 3 gamma), MAP1LC3C

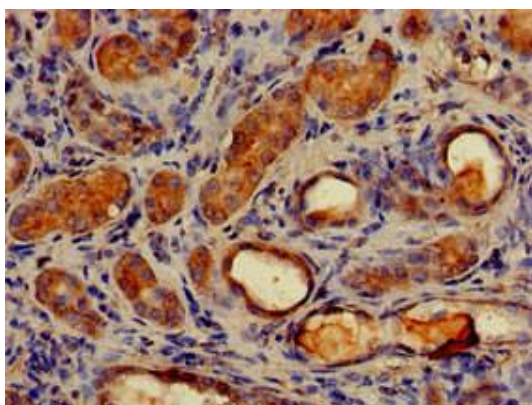
Immunogen:

Recombinant Human Microtubule-associated proteins 1A/1B light chain 3C protein (1-30AA).

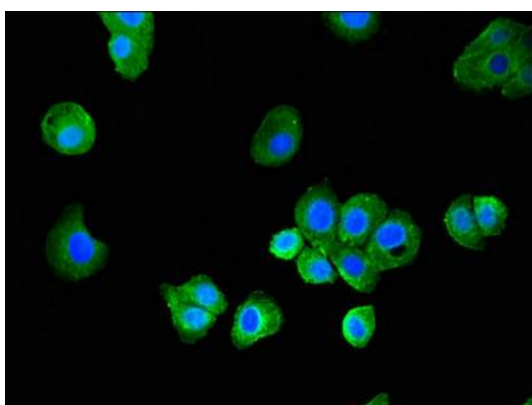
Storage:

Preservative: 0.03% Proclin 300. Constituents: 50% Glycerol, 0.01M PBS, pH 7.4

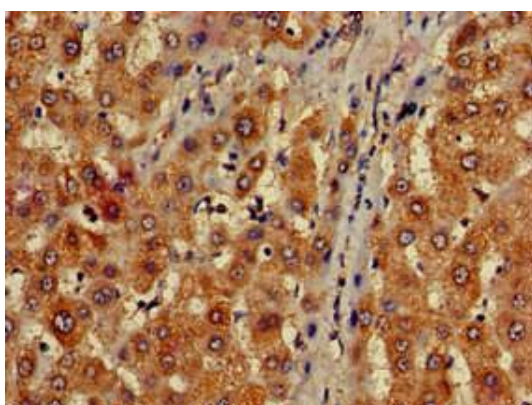
Product Images



Immunohistochemistry of paraffin-embedded human kidney tissue using PACO51138 at dilution of 1:100.



Immunofluorescent analysis of HepG2 cells using PACO51138 at dilution of 1:100 and Alexa Fluor 488-conjugated AffiniPure Goat Anti-Rabbit IgG(H+L).



Immunohistochemistry of paraffin-embedded human liver tissue using PACO51138 at dilution of 1:100.