

Product Information

Size:

50ug

Reactivity:

Human

Source:

Rabbit

Isotype:

IgG

Applications:

ELISA, IHC

Recommended dilutions:

ELISA:1:2000-1:10000, IHC:1:20-1:200

Protein Background:

Involved in the maturation of mitochondrial 4Fe-4S proteins functioning late in the iron-sulfur cluster assembly pathway. Probably involved in the binding of an intermediate of Fe/S cluster assembly.

Gene ID:

ISCA1

Uniprot

Q9BUE6

Synonyms:

Iron-sulfur cluster assembly 1 homolog, mitochondrial (HESB-like domain-containing protein 2) (Iron-sulfur assembly protein IscA) (hIscA), ISCA1, HBLD2

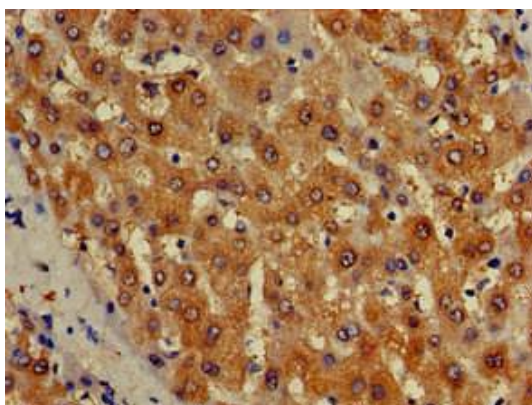
Immunogen:

Recombinant Human Iron-sulfur cluster assembly 1 homolog, mitochondrial protein (67-122AA).

Storage:

Preservative: 0.03% Proclin 300. Constituents: 50% Glycerol, 0.01M PBS, pH 7.4

Product Images



Immunohistochemistry of paraffin-embedded human liver tissue using PACO51134 at dilution of 1:100.