

Product Information

Size:

50ug

Reactivity:

Human, Mouse

Source:

Rabbit

Isotype:

IgG

Applications:

ELISA, WB, IF

Recommended dilutions:

ELISA:1:2000-1:10000, WB:1:500-1:5000,
IF:1:50-1:200

Protein Background:

NAD-dependent protein deacetylase. Activates or deactivates mitochondrial target proteins by deacetylating key lysine residues. Known targets include ACSS1, IDH, GDH, SOD2, PDHA1, LCAD, SDHA and the ATP synthase subunit ATP5O. Contributes to the regulation of the cellular energy metabolism. Important for regulating tissue-specific ATP levels.

Gene ID:

SIRT3

Uniprot

Q9NTG7

Synonyms:

NAD-dependent protein deacetylase sirtuin-3, mitochondrial (hSIRT3) (EC 3.5.1)
(Regulatory protein SIR2 homolog 3) (SIR2-like protein 3), SIRT3, SIR2L3

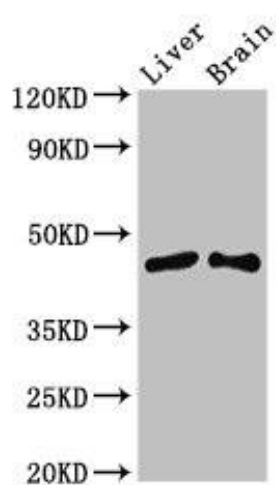
Immunogen:

Recombinant Human NAD-dependent protein deacetylase sirtuin-3, mitochondrial protein (20-130AA).

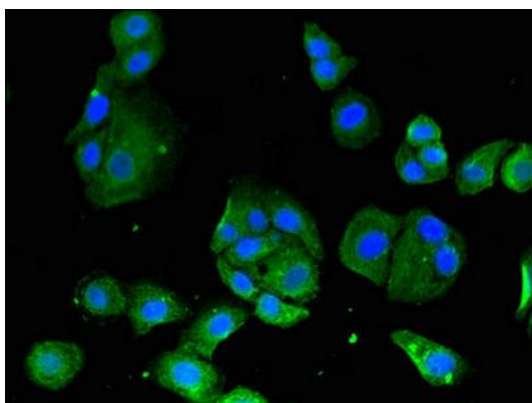
Storage:

Preservative: 0.03% Proclin 300. Constituents: 50% Glycerol, 0.01M PBS, pH 7.4

Product Images



Western Blot. Positive WB detected in: Mouse liver tissue, Mouse brain tissue. All lanes: SIRT3 antibody at 3.4 μ g/ml. Secondary. Goat polyclonal to rabbit IgG at 1/50000 dilution. Predicted band size: 44, 29 kDa. Observed band size: 44 kDa.



Immunofluorescent analysis of HepG2 cells using PACO51106 at dilution of 1:100 and Alexa Fluor 488-conjugated AffiniPure Goat Anti-Rabbit IgG(H+L).