

PACO51038

Product Information

Size:

50ug

Reactivity:

Human

Source:

Rabbit

Isotype:

IgG

Applications:

ELISA, IHC

Recommended dilutions:

ELISA:1:2000-1:10000, IHC:1:20-1:200

Protein Background:

S-adenosyl-L-methionine-dependent methyltransferase which specifically dimethylates mitochondrial 12S rRNA at the conserved stem loop. Also required for basal transcription of mitochondrial DNA, probably via its interaction with POLRMT and TFAM. Stimulates transcription independently of the methyltransferase activity. Compared to TFB1M, it activates transcription of mitochondrial DNA more efficiently, while it has less methyltransferase activity.

Gene ID:

TFB2M

Uniprot

Q9H5Q4

Synonyms:

Dimethyladenosine transferase 2, mitochondrial (EC 2.1.1) (Hepatitis C virus NS5A-transactivated protein 5) (HCV NS5A-transactivated protein 5) (Mitochondrial 12S rRNA dimethylase 2) (Mitochondrial transcription factor B2) (h-mtTFB) (h-mtTFB2) (hTFB2M) (mtTFB2) (S-adenosylmethionine-6-N', N'-adenosyl(rRNA) dimethyltransferase 2), TFB2M, NS5ATP5

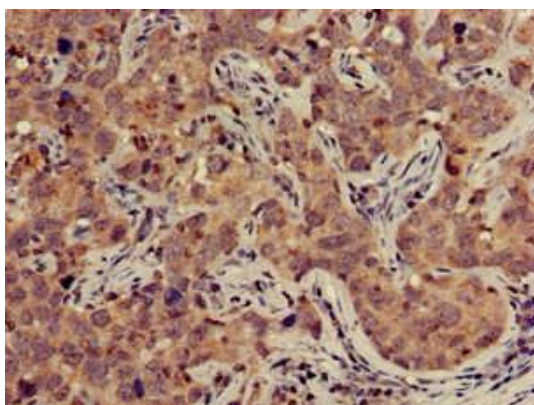
Immunogen:

Recombinant Human Dimethyladenosine transferase 2, mitochondrial protein (30-108AA).

Storage:

Preservative: 0.03% Proclin 300. Constituents: 50% Glycerol, 0.01M PBS, pH 7.4

Product Images



Immunohistochemistry of paraffin-embedded human pancreatic cancer using PACO51038 at dilution of 1:100.