

## Product Information

**Size:**

50ug

**Reactivity:**

Human, Mouse, Rat

**Source:**

Rabbit

**Isotype:**

IgG

**Applications:**

ELISA, WB, IHC, IF

**Recommended dilutions:**

ELISA:1:2000-1:10000, WB:1:500-1:5000,  
IHC:1:20-1:200, IF:1:50-1:200

**Protein Background:**

Guanine nucleotide-binding proteins (G proteins) are involved as a modulator or transducer in various transmembrane signaling systems. The beta and gamma chains are required for the GTPase activity, for replacement of GDP by GTP, and for G protein-effector interaction.

**Gene ID:**

GNB4

**Uniprot**

Q9HAV0

**Synonyms:**

Guanine nucleotide-binding protein subunit beta-4 (Transducin beta chain 4), GNB4

**Immunogen:**

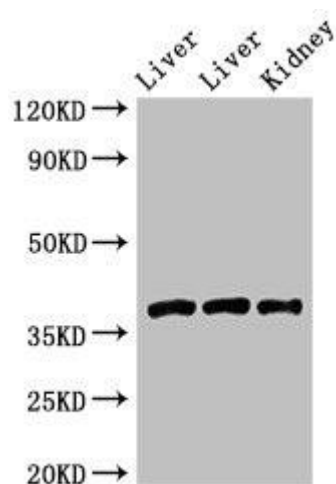
Recombinant Human Guanine nucleotide-binding protein subunit beta-4 protein (105-185AA).

**Storage:**

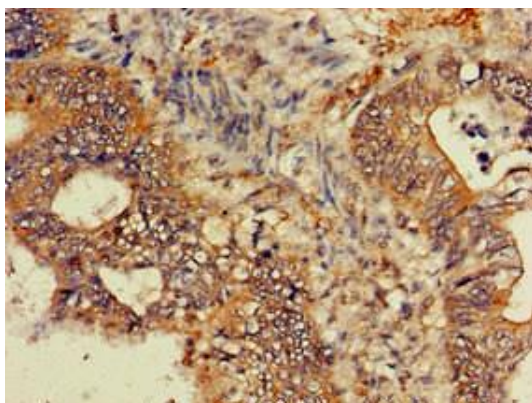
Preservative: 0.03% Proclin 300. Constituents: 50% Glycerol, 0.01M PBS, pH 7.4

## Product Images

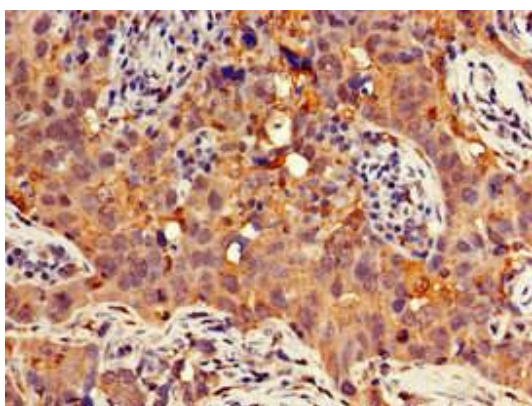
---



Western Blot. Positive WB detected in: Rat liver tissue, Mouse liver tissue, Mouse kidney tissue. All lanes: GNB4 antibody at 2 $\mu$ g/ml. Secondary. Goat polyclonal to rabbit IgG at 1/50000 dilution. Predicted band size: 38 kDa. Observed band size: 38 kDa.



Immunohistochemistry of paraffin-embedded human colon cancer using PACO51002 at dilution of 1:100.



Immunohistochemistry of paraffin-embedded human pancreatic cancer using PACO51002 at dilution of 1:100.