

PITX2 Antibody



PACO50978

Product Information

Size:

50ug

Reactivity:

Human

Source:

Rabbit

Isotype:

IgG

Applications:

ELISA, WB, IHC, IF

Recommended dilutions:

ELISA:1:2000-1:10000, WB:1:500-1:5000,
IHC:1:20-1:200, IF:1:50-1:200

Protein Background:

Controls cell proliferation in a tissue-specific manner and is involved in morphogenesis. During embryonic development, exerts a role in the expansion of muscle progenitors. May play a role in the proper localization of asymmetric organs such as the heart and stomach. Isoform PTX2C is involved in left-right asymmetry the developing embryo.

Gene ID:

PITX2

Uniprot

Q99697

Synonyms:

Pituitary homeobox 2 (ALL1-responsive protein ARP1) (Homeobox protein PITX2) (Paired-like homeodomain transcription factor 2) (RIEG bicoid-related homeobox transcription factor) (Solurshin), PITX2, ARP1 RGS RIEG RIEG1

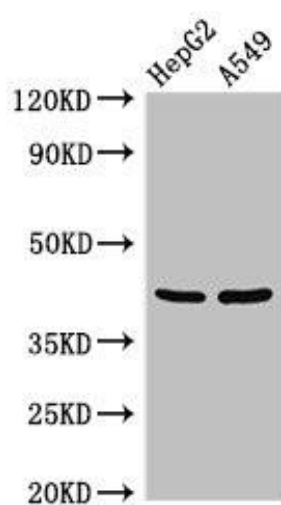
Immunogen:

Recombinant Human Pituitary homeobox 2 protein (40-154AA).

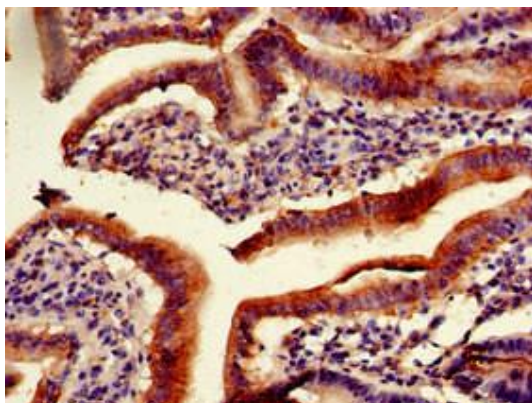
Storage:

Preservative: 0.03% Proclin 300. Constituents: 50% Glycerol, 0.01M PBS, pH 7.4

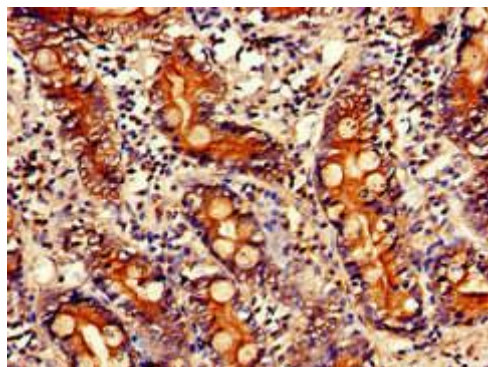
Product Images



Western Blot. Positive WB detected in: HepG2 whole cell lysate, A549 whole cell lysate. All lanes: PITX2 antibody at 3 μ g/ml. Secondary. Goat polyclonal to rabbit IgG at 1/50000 dilution. Predicted band size: 36, 31 kDa. Observed band size: 42 kDa.



Immunohistochemistry of paraffin-embedded human duodenum tissue using PACO50978 at dilution of 1:100.



Immunohistochemistry of paraffin-embedded human small intestine tissue using PACO50978 at dilution of 1:100.