

# NPY6R Antibody



PACO50942

---

## Product Information

**Size:**

50ug

**Reactivity:**

Human, Mouse, Rat

**Source:**

Rabbit

**Isotype:**

IgG

**Applications:**

ELISA, WB, IHC, IF

**Recommended dilutions:**

ELISA:1:2000-1:10000, WB:1:500-1:5000,  
IHC:1:20-1:200, IF:1:50-1:200

**Protein Background:**

When expressed, is unable to bind pancreatic polypeptide (PP), neuropeptide Y (NPY), or peptide YY (PYY), suggesting that either it is functionally inactive or that it may have acquired a pancreatic polypeptide-independent function.

**Gene ID:**

NPY6R

**Uniprot**

Q99463

**Synonyms:**

Putative neuropeptide Y receptor type 6 (NPY6-R) (NPY Y1-like receptor) (Putative pancreatic polypeptide receptor 2) (PP2), NPY6R, NPY1RL Y2B

**Immunogen:**

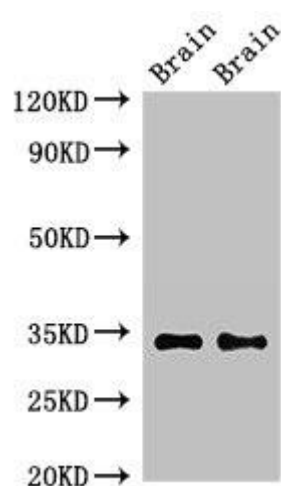
Recombinant Human Putative neuropeptide Y receptor type 6 protein (1-39AA).

**Storage:**

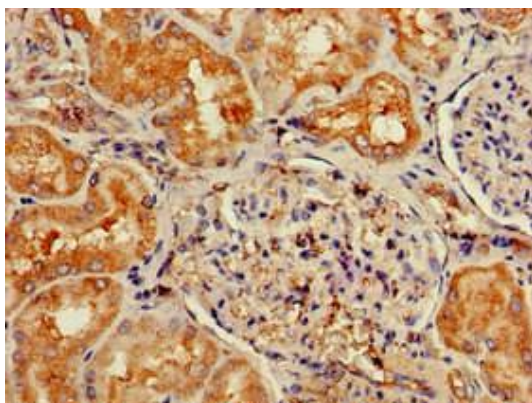
Preservative: 0.03% Proclin 300. Constituents: 50% Glycerol, 0.01M PBS, pH 7.4

## Product Images

---



Western Blot. Positive WB detected in: Mouse brain tissue, Rat brain tissue. All lanes: NPY6R antibody at 2.3 $\mu$ g/ml. Secondary. Goat polyclonal to rabbit IgG at 1/50000 dilution. Predicted band size: 34 kDa. Observed band size: 34 kDa.



Immunohistochemistry of paraffin-embedded human kidney tissue using PACO50942 at dilution of 1:100.



Immunohistochemistry of paraffin-embedded human skeletal muscle tissue using PACO50942 at dilution of 1:100.