

APOPT1 Antibody



PACO50902

Product Information

Size:

50ug

Reactivity:

Human, Mouse

Source:

Rabbit

Isotype:

IgG

Applications:

ELISA, WB

Recommended dilutions:

ELISA:1:2000-1:10000, WB:1:500-1:5000

Protein Background:

Plays a role in the regulation of apoptosis. Mediates mitochondria-induced cell death in vascular smooth muscle cells through the release of cytochrome c from mitochondria, followed by the activation of the caspase cascade.

Gene ID:

APOPT1

Uniprot

Q96IL0

Synonyms:

Apoptogenic protein 1, mitochondrial (APOP-1), APOPT1, APOP1 C14orf153

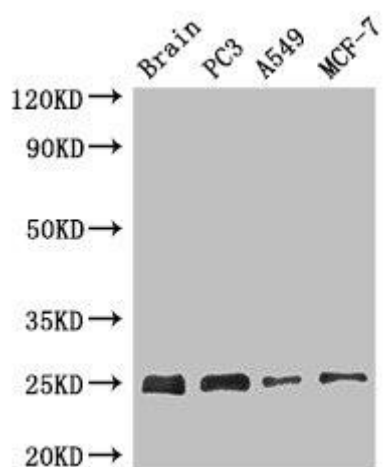
Immunogen:

Recombinant Human Apoptogenic protein 1, mitochondrial protein (40-150AA).

Storage:

Preservative: 0.03% Proclin 300. Constituents: 50% Glycerol, 0.01M PBS, pH 7.4

Product Images



Western Blot. Positive WB detected in: Mouse brain tissue, PC-3 whole cell lysate, A549 whole cell lysate, MCF-7 whole cell lysate. All lanes: APOPT1 antibody at 2.7 μ g/ml. Secondary. Goat polyclonal to rabbit IgG at 1/50000 dilution. predicted band size: 25 kDa. observed band size: 25 kDa.