

BBX Antibody



PACO50866

Product Information

Size:

50ug

Reactivity:

Human

Source:

Rabbit

Isotype:

IgG

Applications:

ELISA, IHC, IF

Recommended dilutions:

ELISA:1:2000-1:10000, IHC:1:20-1:200,
IF:1:50-1:200

Protein Background:

Transcription factor that is necessary for cell cycle progression from G1 to S phase.

Gene ID:

BBX

Uniprot

Q8WY36

Synonyms:

HMG box transcription factor BBX (Bobby sox homolog) (HMG box-containing protein 2), BBX, HBP2

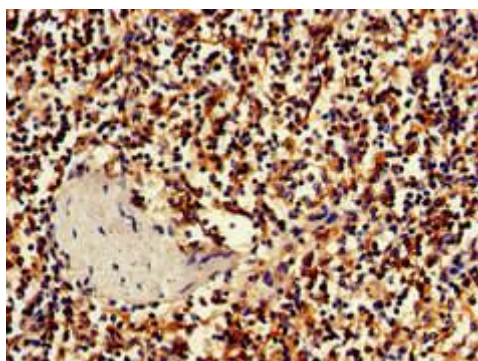
Immunogen:

Recombinant Human HMG box transcription factor BBX protein (62-292AA).

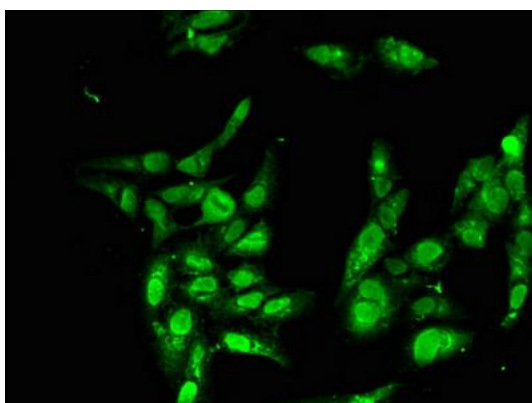
Storage:

Preservative: 0.03% Proclin 300. Constituents: 50% Glycerol, 0.01M PBS, pH 7.4

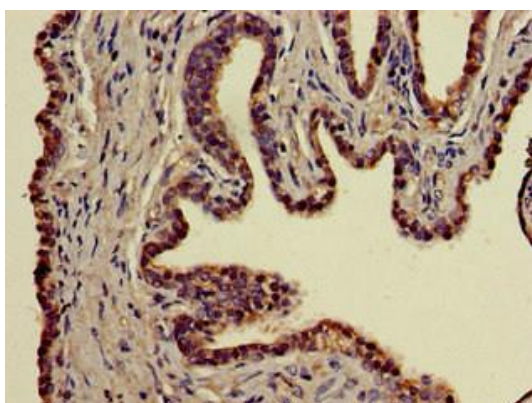
Product Images



Immunohistochemistry of paraffin-embedded human spleen tissue using PACO50866 at dilution of 1:100.



Immunofluorescent analysis of HeLa cells using PACO50866 at dilution of 1:100 and Alexa Fluor 488-conjugated AffiniPure Goat Anti-Rabbit IgG(H+L).



Immunohistochemistry of paraffin-embedded human prostate cancer using PACO50866 at dilution of 1:100.