

# SLC4A9 Antibody



PACO50858

---

## Product Information

**Size:**

50ug

**Reactivity:**

Human

**Source:**

Rabbit

**Isotype:**

IgG

**Applications:**

ELISA, IHC, IF

**Recommended dilutions:**

ELISA:1:2000-1:10000, IHC:1:20-1:200,  
IF:1:50-1:200

**Protein Background:**

Probable apical anion exchanger of the kidney cortex.

**Gene ID:**

SLC4A9

**Uniprot**

Q96Q91

**Synonyms:**

Anion exchange protein 4 (AE 4) (Anion exchanger 4) (Sodium bicarbonate cotransporter 5) (Solute carrier family 4 member 9), SLC4A9, AE4 SBC5

**Immunogen:**

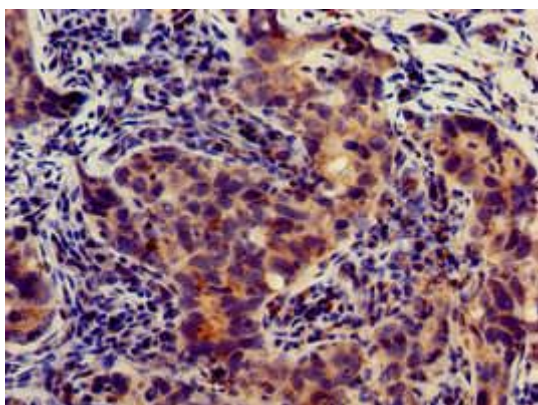
Recombinant Human Anion exchange protein 4 protein (114-402AA).

**Storage:**

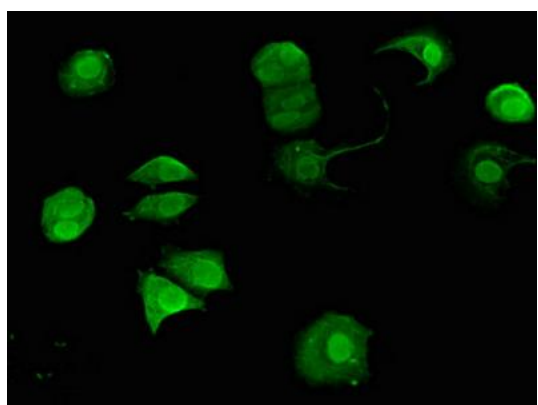
Preservative: 0.03% Proclin 300. Constituents: 50% Glycerol, 0.01M PBS, pH 7.4

## Product Images

---



Immunohistochemistry of paraffin-embedded human pancreatic cancer using PACO50858 at dilution of 1:100.



Immunofluorescent analysis of MCF-7 cells using PACO50858 at dilution of 1:100 and Alexa Fluor 488-conjugated AffiniPure Goat Anti-Rabbit IgG(H+L).