

# C7orf31 Antibody



PACO50842

---

## Product Information

**Size:**

50ug

**Reactivity:**

Human

**Source:**

Rabbit

**Isotype:**

IgG

**Applications:**

ELISA, WB, IF

**Recommended dilutions:**

ELISA:1:2000-1:10000, WB:1:500-1:5000,  
IF:1:50-1:200

**Protein Background:**

centrosome.

**Gene ID:**

C7orf31

**Uniprot**

Q8N865

**Synonyms:**

Uncharacterized protein C7orf31, C7orf31

**Immunogen:**

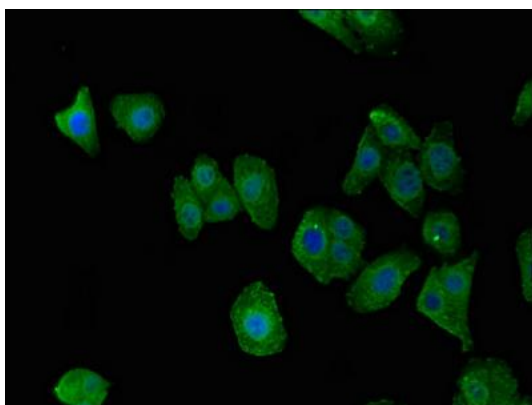
Recombinant Human Uncharacterized protein C7orf31 protein (163-256AA).

**Storage:**

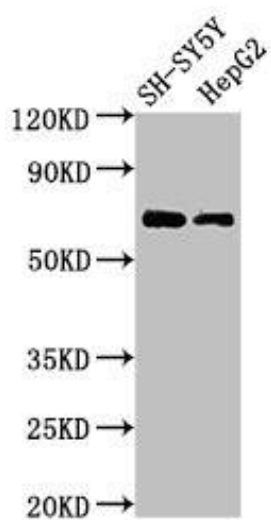
Preservative: 0.03% Proclin 300. Constituents: 50% Glycerol, 0.01M PBS, pH 7.4

## Product Images

---



Immunofluorescent analysis of HepG2 cells using PACO50842 at dilution of 1:100 and Alexa Fluor 488-conjugated AffiniPure Goat Anti-Rabbit IgG(H+L).



Western Blot. Positive WB detected in: SH-SY5Y whole cell lysate, HepG2 whole cell lysate. All lanes: C7orf31 antibody at 2.5 $\mu$ g/ml. Secondary. Goat polyclonal to rabbit IgG at 1/50000 dilution. Predicted band size: 69 kDa. Observed band size: 69 kDa.