

PACO50834

Product Information

Size:

50ug

Reactivity:

Human

Source:

Rabbit

Isotype:

IgG

Applications:

ELISA, IHC, IF

Recommended dilutions:

ELISA:1:2000-1:10000, IHC:1:20-1:200,
IF:1:50-1:200

Protein Background:

Component of the IFT complex A (IFT-A), a complex required for retrograde ciliary transport. Involved in cilia function and/or assembly. Associates with the BBSome complex to mediate ciliary transport.

Gene ID:

WDR19

Uniprot

Q8NEZ3

Synonyms:

WD repeat-containing protein 19 (Intraflagellar transport 144 homolog), WDR19, IFT144 KIAA1638

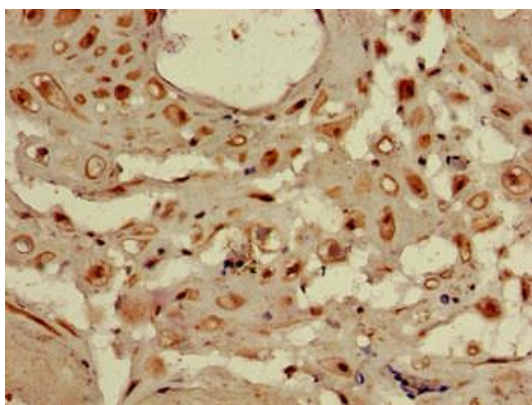
Immunogen:

Recombinant Human WD repeat-containing protein 19 protein (45-226AA).

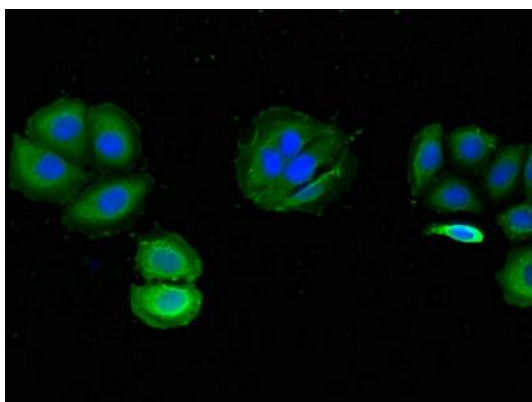
Storage:

Preservative: 0.03% Proclin 300. Constituents: 50% Glycerol, 0.01M PBS, pH 7.4

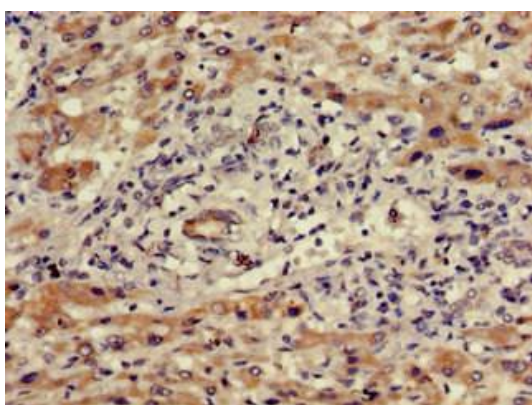
Product Images



Immunohistochemistry of paraffin-embedded human placenta tissue using PACO50834 at dilution of 1:100.



Immunofluorescent analysis of A549 cells using PACO50834 at dilution of 1:100 and Alexa Fluor 488-conjugated AffiniPure Goat Anti-Rabbit IgG(H+L).



Immunohistochemistry of paraffin-embedded human liver cancer using PACO50834 at dilution of 1:100.