

Product Information

Size:

50ug

Reactivity:

Human

Source:

Rabbit

Isotype:

IgG

Applications:

ELISA, IHC, IF

Recommended dilutions:

ELISA:1:2000-1:10000, IHC:1:20-1:200,
IF:1:50-1:200

Protein Background:

Force generating protein of respiratory cilia. Produces force towards the minus ends of microtubules. Dynein has ATPase activity; the force-producing power stroke is thought to occur on release of ADP. Required for structural and functional integrity of the cilia of ependymal cells lining the brain ventricles.

Gene ID:

DNAH5

Uniprot

Q8TE73

Synonyms:

Dynein heavy chain 5, axonemal (Axonemal beta dynein heavy chain 5) (Ciliary dynein heavy chain 5), DNAH5, DNAHC5 HL1 KIAA1603

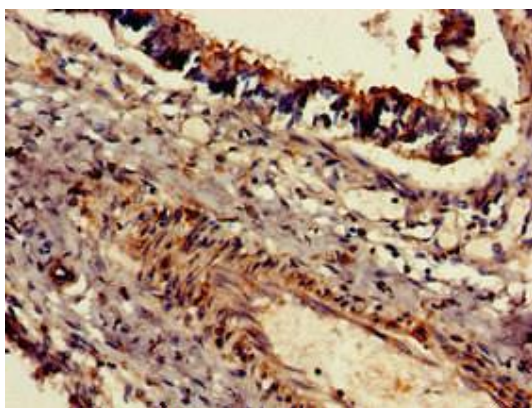
Immunogen:

Recombinant Human Dynein heavy chain 5, axonemal protein (2364-2560AA).

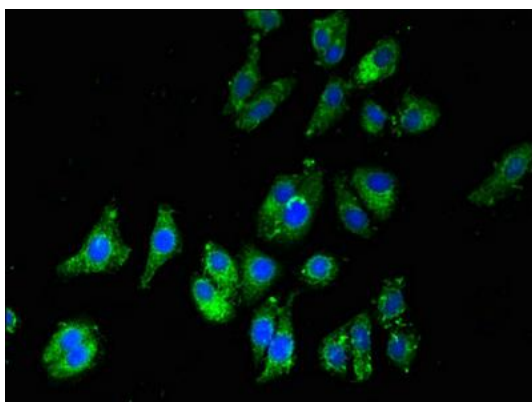
Storage:

Preservative: 0.03% Proclin 300. Constituents: 50% Glycerol, 0.01M PBS, pH 7.4

Product Images



Immunohistochemistry of paraffin-embedded human lung tissue using PACO50786 at dilution of 1:100.



Immunofluorescent analysis of HepG2 cells using PACO50786 at dilution of 1:100 and Alexa Fluor 488-conjugated AffiniPure Goat Anti-Rabbit IgG(H+L).