

DYNC2H1 Antibody



PACO50782

Product Information

Size:

50ug

Reactivity:

Human

Source:

Rabbit

Isotype:

IgG

Applications:

ELISA, WB, IHC, IF

Recommended dilutions:

ELISA:1:2000-1:10000, WB:1:500-1:5000,
IHC:1:20-1:200, IF:1:50-1:200

Protein Background:

May function as a motor for intraflagellar retrograde transport. Functions in cilia biogenesis. May play a role in transport between endoplasmic reticulum and Golgi or organization of the Golgi in cells.

Gene ID:

DYNC2H1

Uniprot

Q8NCM8

Synonyms:

Cytoplasmic dynein 2 heavy chain 1 (Cytoplasmic dynein 2 heavy chain) (Dynein cytoplasmic heavy chain 2) (Dynein heavy chain 11) (hDHC11) (Dynein heavy chain isotype 1B), DYNC2H1, DHC1B DHC2 DNCH2 DYH1B KIAA1997

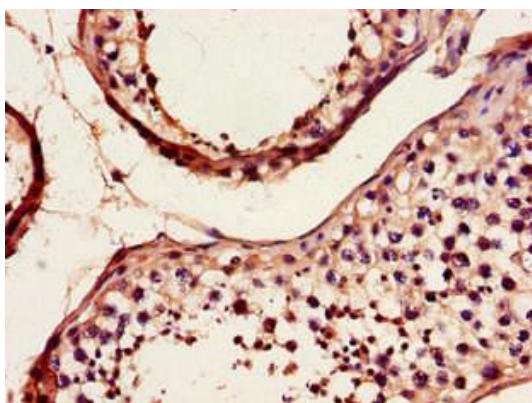
Immunogen:

Recombinant Human Cytoplasmic dynein 2 heavy chain 1 protein (1928-2065AA).

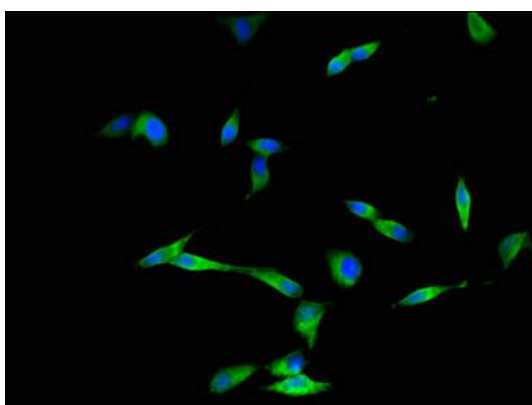
Storage:

Preservative: 0.03% Proclin 300. Constituents: 50% Glycerol, 0.01M PBS, pH 7.4

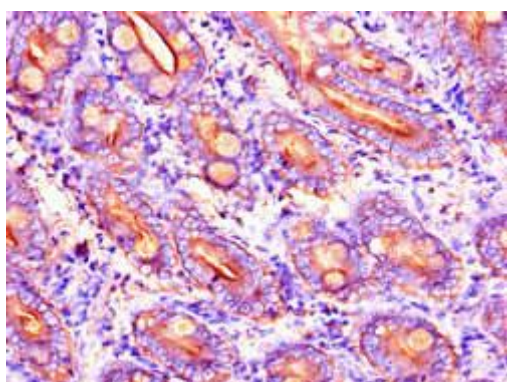
Product Images



Immunohistochemistry of paraffin-embedded human testis tissue using PACO50782 at dilution of 1:100.



Immunofluorescent analysis of HeLa cells using PACO50782 at dilution of 1:100 and Alexa Fluor 488-conjugated AffiniPure Goat Anti-Rabbit IgG(H+L).



Immunohistochemistry of paraffin-embedded human small intestine tissue using PACO50782 at dilution of 1:100.