

TRAPPC11 Antibody



PACO50746

Product Information

Size:

50ug

Reactivity:

Human

Source:

Rabbit

Isotype:

IgG

Applications:

ELISA, IF

Recommended dilutions:

ELISA:1:2000-1:10000, IF:1:50-1:200

Protein Background:

Involved in endoplasmic reticulum to Golgi apparatus trafficking at a very early stage.

Gene ID:

TRAPPC11

Uniprot

Q7Z392

Synonyms:

Trafficking protein particle complex subunit 11, TRAPPC11, C4orf41

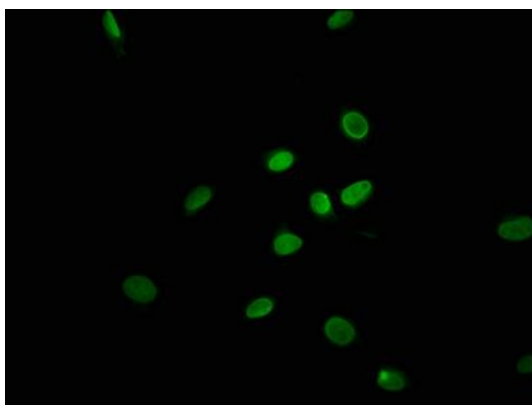
Immunogen:

Recombinant Human Trafficking protein particle complex subunit 11 protein (704-836AA).

Storage:

Preservative: 0.03% Proclin 300. Constituents: 50% Glycerol, 0.01M PBS, pH 7.4

Product Images



Immunofluorescence staining of U251 cells with PACO50746 at 1:100, counter-stained with DAPI. The cells were fixed in 4% formaldehyde, permeabilized using 0.2% Triton X-100 and blocked in 10% normal Goat Serum. The cells were then incubated with the antibody overnight at 4°C. The secondary antibody was Alexa Fluor 488-conjugated AffiniPure Goat Anti-Rabbit IgG(H+L).