

PACO50726

Product Information

Size:

50ug

Reactivity:

Enterococcus faecalis

Source:

Rabbit

Isotype:

IgG

Applications:

ELISA, WB

Recommended dilutions:

ELISA:1:2000-1:10000, WB:1:500-1:5000

Protein Background:

Metalloprotease capable of the hydrolysis of insoluble hydrophobic substrates. Hydrolyzes azocoll and gelatin and, at a lower rate, soluble and insoluble collagens. Does not cleave short synthetic peptides. Preferentially hydrolyzes the 24-Phe-|-Phe-25 bond in the insulin B-chain, followed by the 5-His-|-Leu-6 bond. Inactivates endothelin-1, primarily by cleavage of the 5-Ser-|-Leu-6 and 16-His-|-Leu-17 bonds. Hydrolyzes the alpha chain of C3 to generate a C3b-like protein. Inhibits complement-mediated hemolysis and opsinization of bacteria. Hydrolyzes the insect antimicrobial peptide cecropin. Decreases the length of E. faecalis chains via the activation of autolysin. Degrades polymerized fibrin.

Gene ID:

gelE

Uniprot

Q833V7

Synonyms:

Gelatinase (EC 3.4.24.30) (Coccolysin), gelE

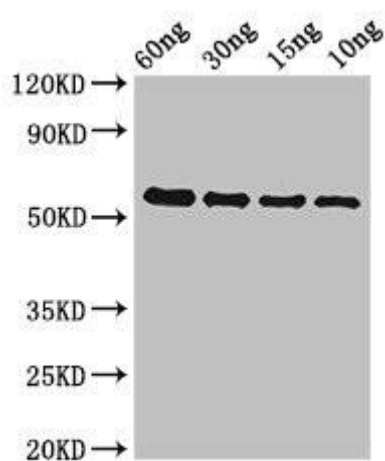
Immunogen:

Recombinant Enterococcus faecalis Gelatinase protein (193-510AA).

Storage:

Preservative: 0.03% Proclin 300. Constituents: 50% Glycerol, 0.01M PBS, pH 7.4

Product Images



Western Blot. Positive WB detected in Recombinant protein. All lanes: gelE antibody at 2 μ g/ml. Secondary. Goat polyclonal to rabbit IgG at 1/50000 dilution. predicted band size: 51 kDa. observed band size: 51 kDa.