

# LLGL2 Antibody



PACO50710

---

## Product Information

**Size:**

50ug

**Reactivity:**

Human

**Source:**

Rabbit

**Isotype:**

IgG

**Applications:**

ELISA, IF

**Recommended dilutions:**

ELISA:1:2000-1:10000, IF:1:50-1:200

**Protein Background:**

Part of a complex with GPM2/LGN, PRKCI/aPKC and PARD6B/Par-6, which may ensure the correct organization and orientation of bipolar spindles for normal cell division. This complex plays roles in the initial phase of the establishment of epithelial cell polarity.

**Gene ID:**

LLGL2

**Uniprot**

Q6P1M3

**Synonyms:**

Lethal(2) giant larvae protein homolog 2 (HGL), LLGL2

**Immunogen:**

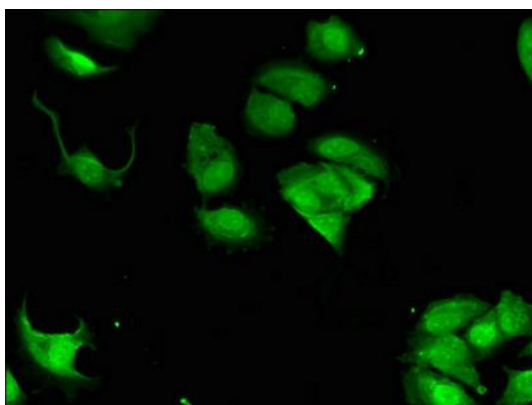
Recombinant Human Lethal(2) giant larvae protein homolog 2 protein (251-505AA).

**Storage:**

Preservative: 0.03% Proclin 300. Constituents: 50% Glycerol, 0.01M PBS, pH 7.4

## Product Images

---



Immunofluorescent analysis of MCF-7 cells using PACO50710 at dilution of 1:100 and Alexa Fluor 488-conjugated AffiniPure Goat Anti-Rabbit IgG(H+L).