

PACO50690

---

## Product Information

**Size:**

50ug

**Reactivity:**

Human, Mouse

**Source:**

Rabbit

**Isotype:**

IgG

**Applications:**

ELISA, WB, IF

**Recommended dilutions:**

ELISA:1:2000-1:10000, WB:1:200-1:2000,  
IF:1:50-1:200

**Protein Background:**

Probably involved in transepithelial sodium transport. Regulates aldosterone-induced and ENaC-mediated sodium transport possibly through regulation of the ERK pathway.

**Gene ID:**

CNKSR3

**Uniprot**

Q6P9H4

**Synonyms:**

Connector enhancer of kinase suppressor of ras 3 (Connector enhancer of KSR 3) (CNK homolog protein 3) (CNK3) (CNKSR family member 3) (Maguin-like protein), CNKSR3, MAGI1

**Immunogen:**

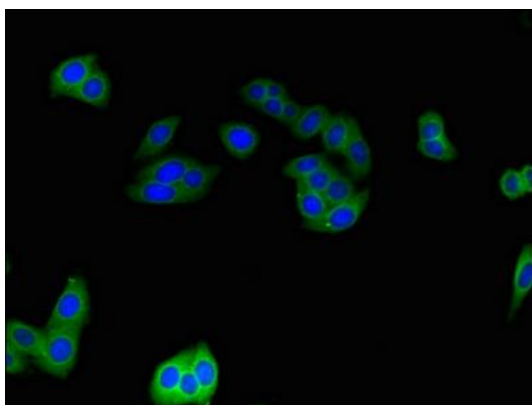
Recombinant Human Connector enhancer of kinase suppressor of ras 3 protein (301-555AA).

**Storage:**

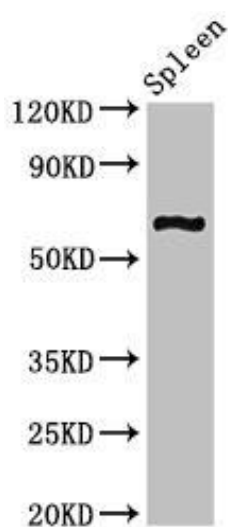
Preservative: 0.03% Proclin 300. Constituents: 50% Glycerol, 0.01M PBS, pH 7.4

## Product Images

---



Immunofluorescent analysis of HepG2 cells using PACO50690 at dilution of 1:100 and Alexa Fluor 488-conjugated AffiniPure Goat Anti-Rabbit IgG(H+L).



Western Blot. Positive WB detected in: Mouse spleen tissue. All lanes: CNKSR3 antibody at 2 $\mu$ g/ml. Secondary. Goat polyclonal to rabbit IgG at 1/50000 dilution. Predicted band size: 62, 101, 93 kDa. Observed band size: 62 kDa.