

PACO50618

Product Information

Size:

50ug

Reactivity:

Human, Rat

Source:

Rabbit

Isotype:

IgG

Applications:

ELISA, WB, IHC

Recommended dilutions:

ELISA:1:2000-1:10000, WB:1:500-1:5000,
IHC:1:20-1:200

Protein Background:

May have on role on T-cell metabolism however these data are controversial.

Gene ID:

LEXM

Uniprot

Q3ZCV2

Synonyms:

Lymphocyte expansion molecule, LEXM, LEM

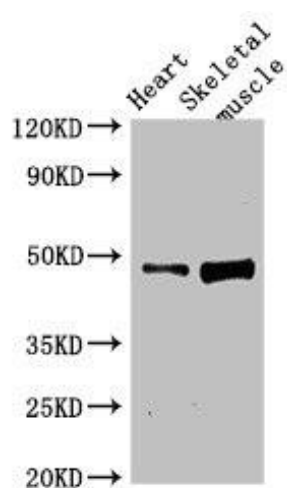
Immunogen:

Recombinant Human Lymphocyte expansion molecule protein (1-418AA).

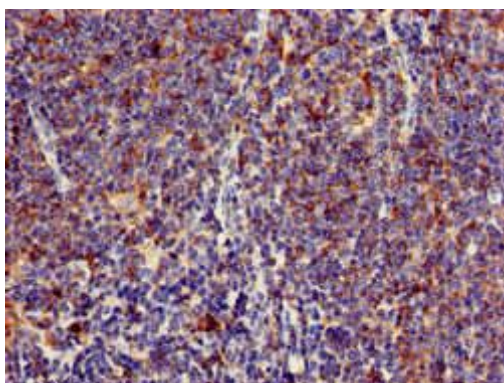
Storage:

Preservative: 0.03% Proclin 300. Constituents: 50% Glycerol, 0.01M PBS, pH 7.4

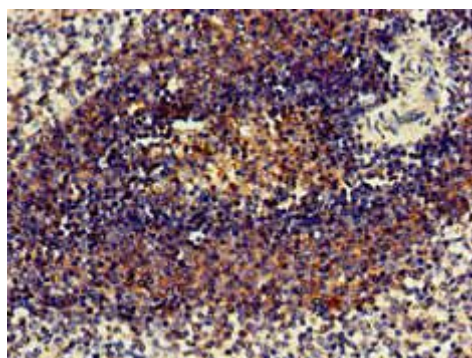
Product Images



Western Blot. Positive WB detected in: Rat heart tissue, Rat skeletal muscle tissue. All lanes: LEXM antibody at 4 μ g/ml. Secondary. Goat polyclonal to rabbit IgG at 1/50000 dilution. Predicted band size: 48 kDa. Observed band size: 48 kDa.



Immunohistochemistry of paraffin-embedded human lymph node tissue using PACO50618 at dilution of 1:100.



Immunohistochemistry of paraffin-embedded human spleen tissue using PACO50618 at dilution of 1:100.