

## Product Information

**Size:**

50ug

**Reactivity:**

Human, Mouse, Rat

**Source:**

Rabbit

**Isotype:**

IgG

**Applications:**

ELISA, WB, IF

**Recommended dilutions:**

ELISA:1:2000-1:10000, WB:1:500-1:5000,  
IF:1:200-1:500

**Protein Background:**

Acts as a scaffold for the formation of a ternary MAP3K2/MAP3K3-MAP3K5-MAPK7 signaling complex. Activation of this pathway appears to play a critical role in protecting cells from stress-induced apoptosis, neuronal survival and cardiac development and angiogenesis.

**Gene ID:**

MAP2K5

**Uniprot**

Q13163

**Synonyms:**

Dual specificity mitogen-activated protein kinase kinase 5 (MAP kinase kinase 5) (MAPKK 5) (EC 2.7.12.2) (MAPK/ERK kinase 5) (MEK 5), MAP2K5, MEK5 MKK5 PRKMK5

**Immunogen:**

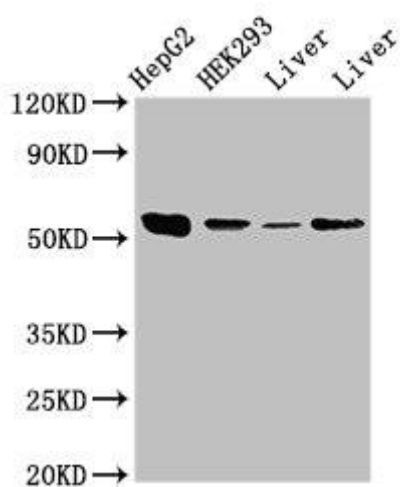
Recombinant Human Dual specificity mitogen-activated protein kinase kinase 5 protein (1-190AA).

**Storage:**

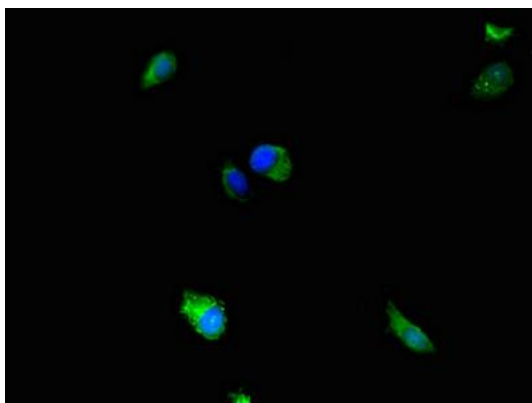
Preservative: 0.03% Proclin 300. Constituents: 50% Glycerol, 0.01M PBS, pH 7.4

## Product Images

---



Western Blot. Positive WB detected in: HepG2 whole cell lysate, HEK293 whole cell lysate, Rat liver tissue, Mouse liver tissue. All lanes: MAP2K5 antibody at 3.5µg/ml. Secondary. Goat polyclonal to rabbit IgG at 1/50000 dilution. Predicted band size: 51, 49, 50, 47 kDa. Observed band size: 51 kDa.



Immunofluorescence staining of HeLa cells with PACO50514 at 1:233, counter-stained with DAPI. The cells were fixed in 4% formaldehyde, permeabilized using 0.2% Triton X-100 and blocked in 10% normal Goat Serum. The cells were then incubated with the antibody overnight at 4°C. The secondary antibody was Alexa Fluor 488-conjugated AffiniPure Goat Anti-Rabbit IgG(H+L).