

PTK6 Antibody



PACO50498

Product Information

Size:

50ug

Reactivity:

Human

Source:

Rabbit

Isotype:

IgG

Applications:

ELISA, WB, IF

Recommended dilutions:

ELISA:1:2000-1:10000, WB:1:500-1:5000,
IF:1:50-1:200

Protein Background:

Gene ID:

PTK6

Uniprot

Q13882

Synonyms:

Protein-tyrosine kinase 6 (EC 2.7.10.2) (Breast tumor kinase) (Tyrosine-protein kinase BRK), PTK6, BRK

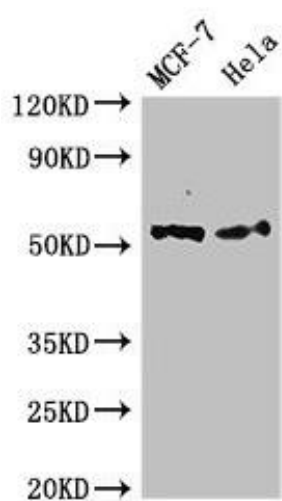
Immunogen:

Recombinant Human Protein-tyrosine kinase 6 protein (1-113AA).

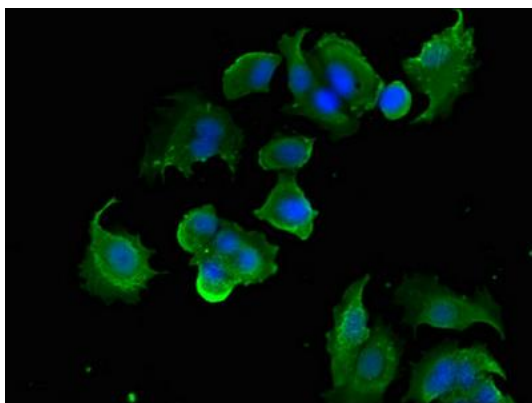
Storage:

Preservative: 0.03% Proclin 300. Constituents: 50% Glycerol, 0.01M PBS, pH 7.4

Product Images



Western Blot. Positive WB detected in: MCF-7 whole cell lysate, HeLa whole cell lysate. All lanes: PTK6 antibody at 2.4 μ g/ml. Secondary. Goat polyclonal to rabbit IgG at 1/50000 dilution. Predicted band size: 52, 15 kDa. Observed band size: 52 kDa.



Immunofluorescent analysis of MCF-7 cells using PACO50498 at dilution of 1:100 and Alexa Fluor 488-conjugated AffiniPure Goat Anti-Rabbit IgG(H+L).