

SLAMF1 Antibody



PACO50490

Product Information

Size:

50ug

Reactivity:

Human

Source:

Rabbit

Isotype:

IgG

Applications:

ELISA, WB, IHC, IF

Recommended dilutions:

ELISA:1:2000-1:10000, WB:1:200-1:5000,
IHC:1:20-1:200, IF:1:50-1:200

Protein Background:

Self-ligand receptor of the signaling lymphocytic activation molecule (SLAM) family. SLAM receptors triggered by homo- or heterotypic cell-cell interactions are modulating the activation and differentiation of a wide variety of immune cells and thus are involved in the regulation and interconnection of both innate and adaptive immune response. Activities are controlled by presence or absence of small cytoplasmic adapter proteins, SH2D1A/SAP and/or SH2D1B/EAT-2. SLAMF1-induced signal-transduction events in T-lymphocytes are different from those in B-cells. Two modes of SLAMF1 signaling seem to exist: one depending on SH2D1A (and perhaps SH2D1B) and another in which protein-tyrosine phosphatase 2C (PTPN11)-dependent signal transduction operates.

Gene ID:

SLAMF1

Uniprot

Q13291

Synonyms:

Signaling lymphocytic activation molecule (CDw150) (IPO-3) (SLAM family member 1) (CD antigen CD150), SLAMF1, SLAM

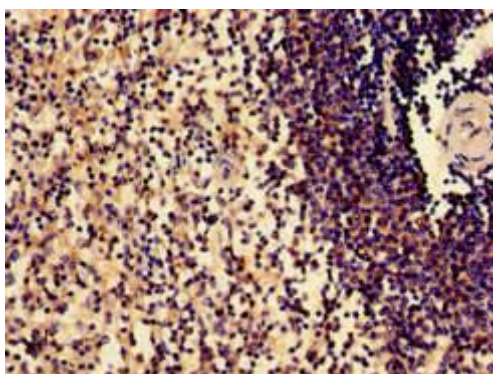
Immunogen:

Recombinant Human Signaling lymphocytic activation molecule protein (69-204AA).

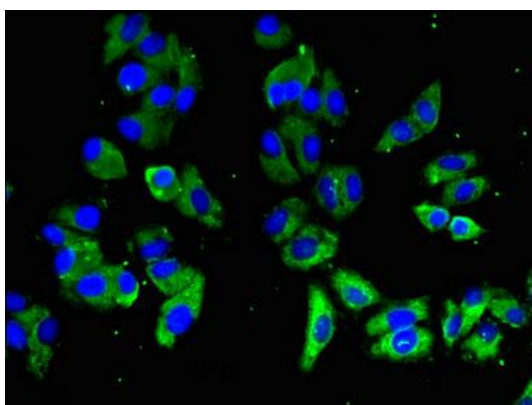
Storage:

Preservative: 0.03% Proclin 300. Constituents: 50% Glycerol, 0.01M PBS, pH 7.4

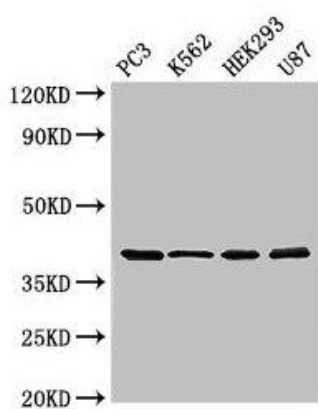
Product Images



Immunohistochemistry of paraffin-embedded human spleen tissue using PACO50490 at dilution of 1:100.



Immunofluorescent analysis of HepG2 cells using PACO50490 at dilution of 1:100 and Alexa Fluor 488-conjugated AffiniPure Goat Anti-Rabbit IgG(H+L).



Western Blot

Positive WB detected in: PC-3 whole cell lysate, K562 whole cell lysate, HEK293 whole cell lysate, U87 whole cell lysate

All lanes: SLAMF1 antibody at 3 µg/ml

Secondary

Goat polyclonal to rabbit IgG at 1/50000 dilution

Predicted band size: 38, 34, 41 kDa

Observed band size: 38 kDa.