

PACO50474

Product Information

Size:

50ug

Reactivity:

Human

Source:

Rabbit

Isotype:

IgG

Applications:

ELISA, IHC, IF

Recommended dilutions:

ELISA:1:2000-1:10000, IHC:1:20-1:200,
IF:1:50-1:200

Protein Background:

Cytoplasmic dynein 1 acts as a motor for the intracellular retrograde motility of vesicles and organelles along microtubules. Dynein has ATPase activity; the force-producing power stroke is thought to occur on release of ADP.

Gene ID:

DYNC1H1

Uniprot

Q14204

Synonyms:

Cytoplasmic dynein 1 heavy chain 1 (Cytoplasmic dynein heavy chain 1) (Dynein heavy chain, cytosolic), DYNC1H1, DHC1 DNCH1 DNCL DNECL DYHC KIAA0325

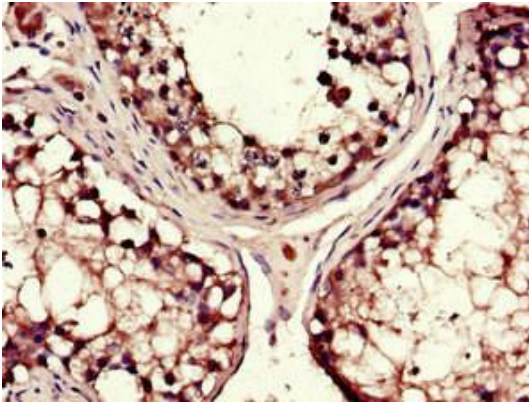
Immunogen:

Recombinant Human Cytoplasmic dynein 1 heavy chain 1 protein (12-66AA).

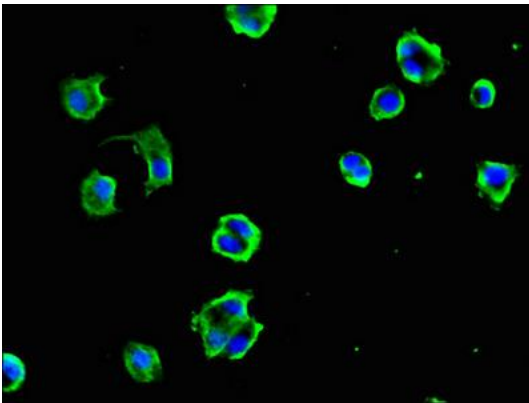
Storage:

Preservative: 0.03% Proclin 300. Constituents: 50% Glycerol, 0.01M PBS, pH 7.4

Product Images



Immunohistochemistry of paraffin-embedded human testis tissue using PACO50474 at dilution of 1:100.



Immunofluorescent analysis of MCF-7 cells using PACO50474 at dilution of 1:100 and Alexa Fluor 488-conjugated AffiniPure Goat Anti-Rabbit IgG(H+L).