

# GOLGA3 Antibody



PACO50458

---

## Product Information

**Size:**

50ug

**Reactivity:**

Human

**Source:**

Rabbit

**Isotype:**

IgG

**Applications:**

ELISA, IHC, IF

**Recommended dilutions:**

ELISA:1:2000-1:10000, IHC:1:20-1:200,  
IF:1:50-1:200

**Protein Background:**

Golgi auto-antigen; probably involved in maintaining Golgi structure.

**Gene ID:**

GOLGA3

**Uniprot**

Q08378

**Synonyms:**

Golgin subfamily A member 3 (Golgi complex-associated protein of 170 kDa) (GCP170) (Golgin-160), GOLGA3

**Immunogen:**

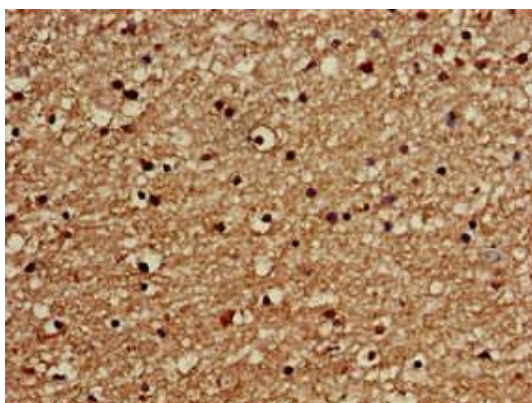
Recombinant Human Golgin subfamily A member 3 protein (217-405AA).

**Storage:**

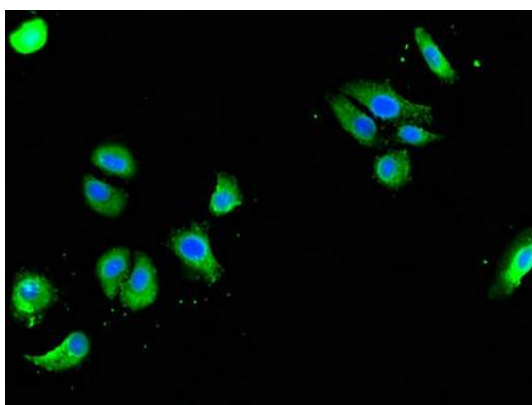
Preservative: 0.03% Proclin 300. Constituents: 50% Glycerol, 0.01M PBS, pH 7.4

## Product Images

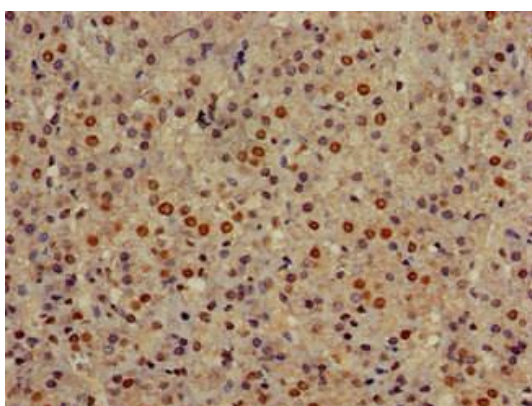
---



Immunohistochemistry of paraffin-embedded human brain tissue using PACO50458 at dilution of 1:100.



Immunofluorescent analysis of HepG2 cells using PACO50458 at dilution of 1:100 and Alexa Fluor 488-conjugated AffiniPure Goat Anti-Rabbit IgG(H+L).



Immunohistochemistry of paraffin-embedded human adrenal gland tissue using PACO50458 at dilution of 1:100.