

PACO50414

---

## Product Information

**Size:**

50ug

**Reactivity:**

Laribacter hongkongensis

**Source:**

Rabbit

**Isotype:**

IgG

**Applications:**

ELISA, WB

**Recommended dilutions:**

ELISA:1:2000-1:10000, WB:1:500-1:5000

**Protein Background:**

Catalyzes the transfer of a ribosyl phosphate group from 5-phosphoribose 1-diphosphate to orotate, leading to the formation of orotidine monophosphate (OMP).

**Gene ID:**

pyrE

**Uniprot**

C1D6F5

**Synonyms:**

Orotate phosphoribosyltransferase (OPRT) (OPRTase) (EC 2.4.2.10), pyrE

**Immunogen:**

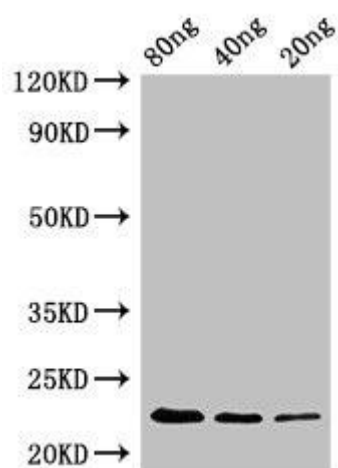
Recombinant Laribacter hongkongensis Orotate phosphoribosyltransferase protein (1-213AA).

**Storage:**

Preservative: 0.03% Proclin 300. Constituents: 50% Glycerol, 0.01M PBS, pH 7.4

## Product Images

---



Western Blot. Positive WB detected in Recombinant protein. All lanes: pyrE antibody at 2.4 $\mu$ g/ml. Secondary. Goat polyclonal to rabbit IgG at 1/50000 dilution. predicted band size: 23 kDa. observed band size: 23 kDa.