

Rubredoxin Antibody



PACO50378

Product Information

Size:

50ug

Reactivity:

Clostridium pasteurianum

Source:

Rabbit

Isotype:

IgG

Applications:

ELISA, WB

Recommended dilutions:

ELISA:1:2000-1:10000, WB:1:2000-1:10000

Protein Background:

Rubredoxin is a small nonheme, iron protein lacking acid, labile sulfide. Its single Fe, chelated to 4 Cys, functions as an electron acceptor and may also stabilize the conformation of the molecule.

Gene ID:**Uniprot**

P00268

Synonyms:

Rubredoxin (Rd)

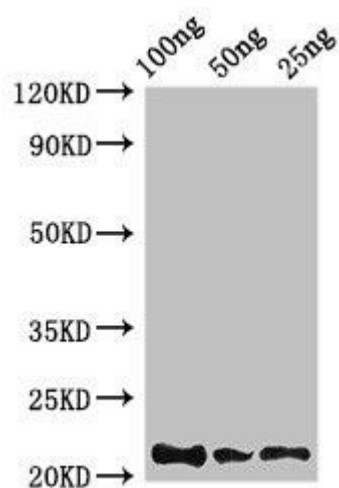
Immunogen:

Recombinant Clostridium pasteurianum Rubredoxin protein (1-54AA).

Storage:

Preservative: 0.03% Proclin 300. Constituents: 50% Glycerol, 0.01M PBS, pH 7.4

Product Images



Western Blot. Positive WB detected in Recombinant protein. All lanes: Rubredoxin antibody at 2.8 μ g/ml. Secondary. Goat polyclonal to rabbit IgG at 1/50000 dilution. predicted band size: 22 kDa. observed band size: 22 kDa.