

PACO50370

Product Information

Size:

50ug

Reactivity:

Staphylococcus aureus

Source:

Rabbit

Isotype:

IgG

Applications:

ELISA, WB

Recommended dilutions:

ELISA:1:2000-1:10000, WB:1:500-1:5000

Protein Background:

Has serine protease-like properties and binds to the skin protein profilaggrin. Cleaves substrates after acid, c residues. Exfoliative toxins cause impetigous diseases commonly referred as staphylococcal scalded skin syndrome (SSSS).

Gene ID:

eta

Uniprot

P09331

Synonyms:

Exfoliative toxin A (EC 3.4.21) (Epidermolytic toxin A), eta

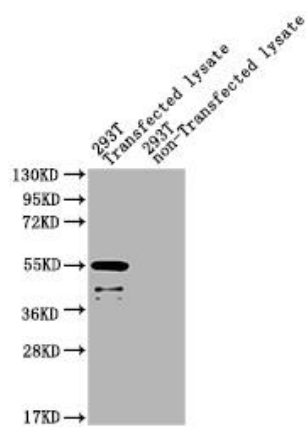
Immunogen:

Recombinant Staphylococcus aureus Exfoliative toxin A protein (39-280AA).

Storage:

Preservative: 0.03% Proclin 300. Constituents: 50% Glycerol, 0.01M PBS, pH 7.4

Product Images



Western Blot. Positive WB detected in Recombinant protein. All lanes: eta antibody at 3µg/ml. Secondary. Goat polyclonal to rabbit IgG at 1/50000 dilution. predicted band size: 32 kDa. observed band size: 32 kDa.