

PKHD1 Antibody



PACO50362

Product Information

Size:

50ug

Reactivity:

Human

Source:

Rabbit

Isotype:

IgG

Applications:

ELISA, WB, IHC, IF

Recommended dilutions:

ELISA:1:2000-1:10000, WB:1:500-1:5000,
IHC:1:20-1:200, IF:1:50-1:200

Protein Background:

May be required for correct bipolar cell division through the regulation of centrosome duplication and mitotic spindle assembly. May be a receptor protein that acts in collecting-duct and biliary differentiation.

Gene ID:

PKHD1

Uniprot

P08F94

Synonyms:

Fibrocystin (Polycystic kidney and hepatic disease 1 protein) (Polyductin) (Tigmin),
PKHD1, FCYT TIGM1

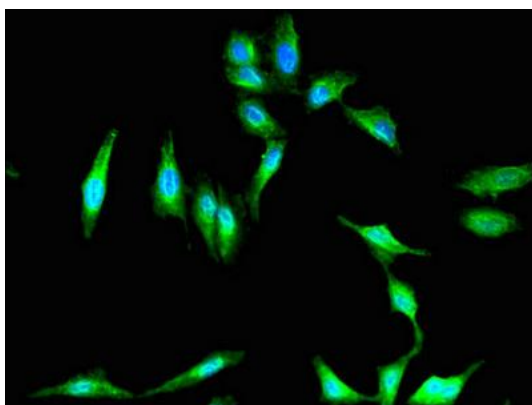
Immunogen:

Recombinant Human Fibrocystin protein (520-743AA).

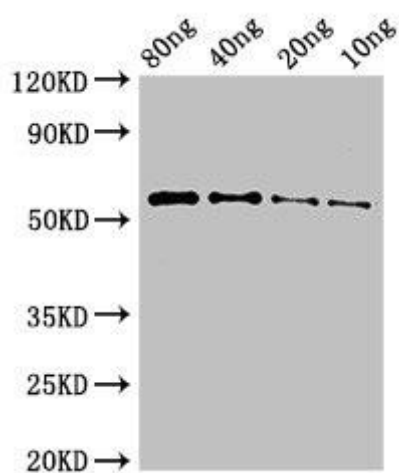
Storage:

Preservative: 0.03% Proclin 300. Constituents: 50% Glycerol, 0.01M PBS, pH 7.4

Product Images



Immunofluorescent analysis of HeLa cells using PACO50362 at dilution of 1:100 and Alexa Fluor 488-conjugated AffiniPure Goat Anti-Rabbit IgG(H+L).



Western Blot. Positive WB detected in Recombinant protein. All lanes: PKHD1 antibody at 3 μ g/ml. Secondary. Goat polyclonal to rabbit IgG at 1/50000 dilution. predicted band size: 55 kDa. observed band size: 55 kDa.