

PACO50350

Product Information

Size:

50ug

Reactivity:

Staphylococcus aureus

Source:

Rabbit

Isotype:

IgG

Applications:

ELISA, WB

Recommended dilutions:

ELISA:1:2000-1:10000, WB:1:500-1:5000

Protein Background:

Forms part of the ribosomal stalk which helps the ribosome interact with GTP-bound translation factors. Is thus essential for accurate translation.

Gene ID:

rpIL

Uniprot

P66061

Synonyms:

50S ribosomal protein L7/L12, rpIL

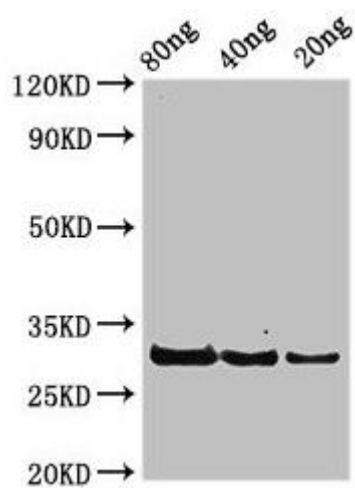
Immunogen:

Recombinant Staphylococcus aureus 50S ribosomal protein L7/L12 protein (1-122AA).

Storage:

Preservative: 0.03% Proclin 300. Constituents: 50% Glycerol, 0.01M PBS, pH 7.4

Product Images



Western Blot. Positive WB detected in Recombinant protein. All lanes: rplL antibody at 3.25 μ g/ml. Secondary. Goat polyclonal to rabbit IgG at 1/50000 dilution. Predicted band size: 30 kDa. Observed band size: 30 kDa.