

PACO50342

---

## Product Information

**Size:**

50ug

**Reactivity:**

Staphylococcus aureus

**Source:**

Rabbit

**Isotype:**

IgG

**Applications:**

ELISA, WB

**Recommended dilutions:**

ELISA:1:2000-1:10000, WB:1:500-1:5000

**Protein Background:**

May play a role in cell wall synthesis as L-alanine is an important constituent of the peptidoglycan layer.

**Gene ID:**

ald1

**Uniprot**

P63478

**Synonyms:**

Alanine dehydrogenase 1 (EC 1.4.1.1), ald1

**Immunogen:**

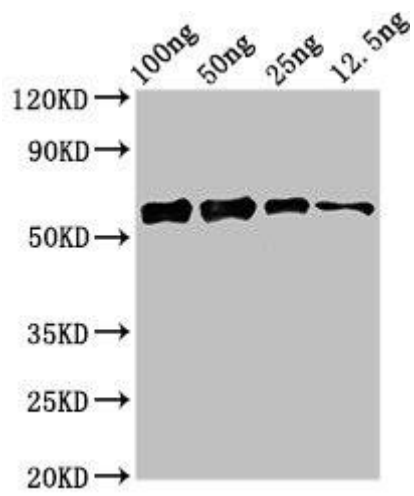
Recombinant Staphylococcus aureus Alanine dehydrogenase 1 protein (1-372AA).

**Storage:**

Preservative: 0.03% Proclin 300. Constituents: 50% Glycerol, 0.01M PBS, pH 7.4

## Product Images

---



Western Blot. Positive WB detected in Recombinant protein. All lanes: ald1 antibody at 2.4 $\mu$ g/ml. Secondary. Goat polyclonal to rabbit IgG at 1/50000 dilution. predicted band size: 57 kDa. observed band size: 57 kDa.