

PACO50230

Product Information

Size:

50ug

Reactivity:

Zebrafish

Source:

Rabbit

Isotype:

IgG

Applications:

ELISA, WB

Recommended dilutions:

ELISA:1:2000-1:10000, WB:1:500-1:5000

Protein Background:

blood vessel lumenization.

Gene ID:

egfra

Uniprot

F1RA48

Synonyms:

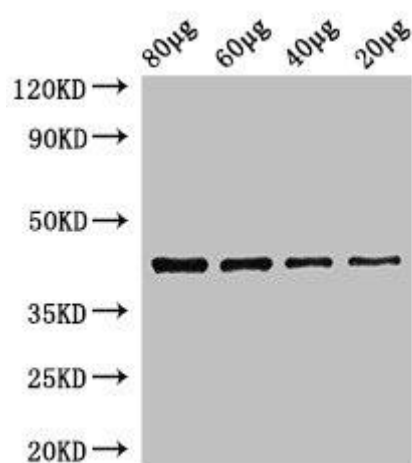
Immunogen:

Recombinant Zebrafish Epidermal growth factor receptor protein (21-389AA).

Storage:

Preservative: 0.03% Proclin 300. Constituents: 50% Glycerol, 0.01M PBS, pH 7.4

Product Images



Western Blot. Positive WB detected in: Zebrafish tissue 80µg, 60µg, 40µg, 20µg. All lanes: egfra antibody at 3.5µg/ml. Secondary. Goat polyclonal to rabbit IgG at 1/50000 dilution. Predicted band size: 43 kDa. Observed band size: 43 kDa.