

Product Information

Size:

50ug

Reactivity:

Human, Mouse

Source:

Rabbit

Isotype:

IgG

Applications:

ELISA, WB, IHC

Recommended dilutions:

ELISA:1:2000-1:10000, WB:1:500-1:5000,
IHC:1:20-1:200

Protein Background:

Monokine with inflammatory and chemokinetic properties. Binds to CCR1, CCR4 and CCR5. One of the major HIV-suppressive factors produced by CD8+ T-cells.

Recombinant MIP-1-alpha induces a dose-dependent inhibition of different strains of HIV-1, HIV-2, and simian immunodeficiency virus (SIV).

Gene ID:

CCL3

Uniprot

P10147

Synonyms:

C-C motif chemokine 3 (G0/G1 switch regulatory protein 19-1) (Macrophage inflammatory protein 1-alpha) (MIP-1-alpha) (PAT 464.1) (SIS-beta) (Small-inducible cytokine A3) (Tonsillar lymphocyte LD78 alpha protein) [Cleaved into: MIP-1-alpha(4-69) (LD78-alpha(4-69))], CCL3, G0S19-1 MIP1A SCYA3

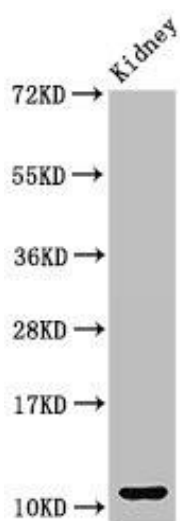
Immunogen:

Recombinant Human C-C motif chemokine 3 protein (25-81AA).

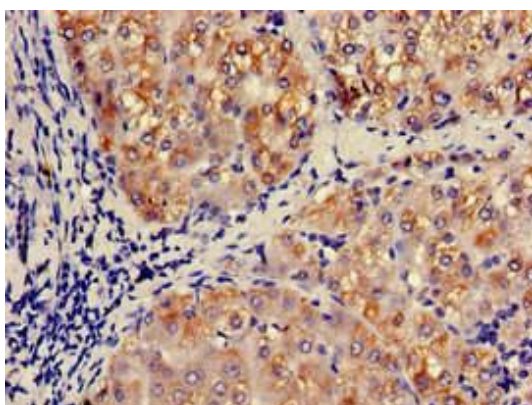
Storage:

Preservative: 0.03% Proclin 300. Constituents: 50% Glycerol, 0.01M PBS, pH 7.4

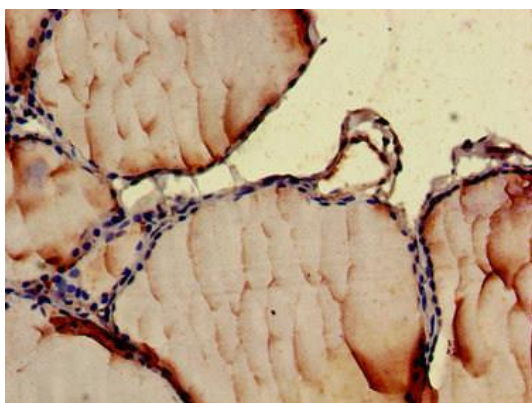
Product Images



Western Blot. Positive WB detected in: Mouse kidney tissue. All lanes: CCL3 antibody at 3 μ g/ml. Secondary. Goat polyclonal to rabbit IgG at 1/50000 dilution. Predicted band size: 11 kDa. Observed band size: 11 kDa.



Immunohistochemistry of paraffin-embedded human liver tissue using PACO50126 at dilution of 1:100.



Immunohistochemistry of paraffin-embedded human thyroid tissue using PACO50126 at dilution of 1:100.