

Product Information

Size:

50ug

Reactivity:

Human, Rat

Source:

Rabbit

Isotype:

IgG

Applications:

ELISA, WB, IHC, IF

Recommended dilutions:

ELISA:1:2000-1:10000, WB:1:500-1:5000,
IHC:1:20-1:200, IF:1:50-1:200

Protein Background:

Deubiquitinase with an ATP-independent isopeptidase activity, cleaving at the C-terminus of the ubiquitin moiety. Catalyzes its own deubiquitination. In vitro, isoform 2, but not isoform 3, shows deubiquitinating activity. Promotes plasma membrane localization of ARF6 and selectively regulates ARF6-dependent endocytic protein trafficking. Is able to initiate tumorigenesis by inducing the production of matrix metalloproteinases following NF-kappa-B activation.

Gene ID:

USP6

Uniprot

P35125

Synonyms:

Ubiquitin carboxyl-terminal hydrolase 6 (EC 3.4.19.12) (Deubiquitinating enzyme 6) (Proto-oncogene TRE-2) (Ubiquitin thioesterase 6) (Ubiquitin-specific-processing protease 6), USP6, HRP1 TRE2

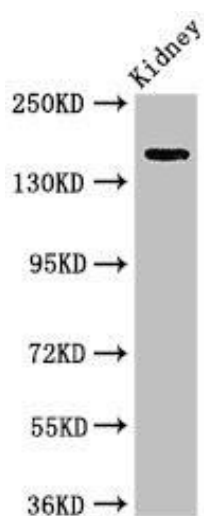
Immunogen:

Recombinant Human Ubiquitin carboxyl-terminal hydrolase 6 protein (1122-1359AA).

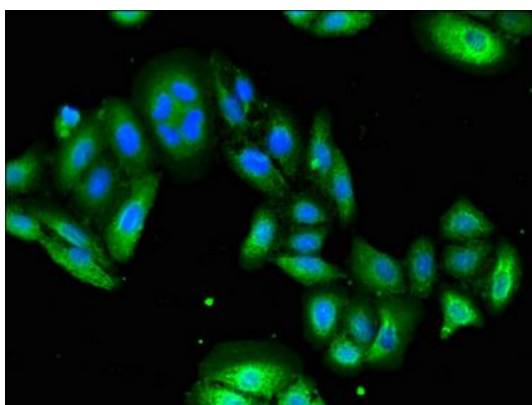
Storage:

Preservative: 0.03% Proclin 300. Constituents: 50% Glycerol, 0.01M PBS, pH 7.4

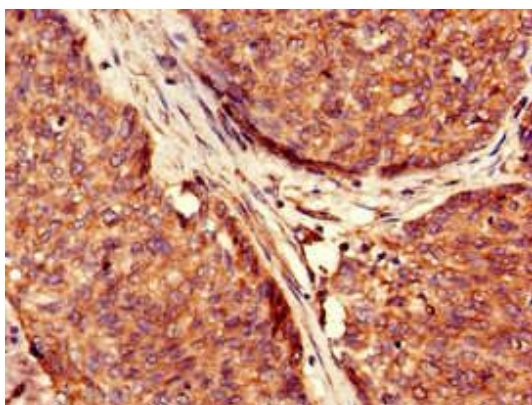
Product Images



Western Blot. Positive WB detected in: Rat kidney tissue. All lanes: USP6 antibody at 4 μ g/ml. Secondary. Goat polyclonal to rabbit IgG at 1/50000 dilution. Predicted band size: 159, 122, 90 kDa. Observed band size: 159 kDa.



Immunofluorescent analysis of HepG2 cells using PACO50090 at dilution of 1:100 and Alexa Fluor 488-conjugated AffiniPure Goat Anti-Rabbit IgG(H+L).



Immunohistochemistry of paraffin-embedded human ovarian cancer using PACO50090 at dilution of 1:100.