

Product Information

Size:

50ug

Reactivity:

Human

Source:

Rabbit

Isotype:

IgG

Applications:

ELISA, IHC

Recommended dilutions:

ELISA:1:2000-1:10000, IHC:1:20-1:200

Protein Background:

Ubiquitin-like modifier which can be covalently attached via an isopeptide bond to substrate proteins as a monomer or a lysine-linked polymer. The so-called ufmylation, requires the UFM1-activating E1 enzyme UBA5, the UFM1-conjugating E2 enzyme UFC1, and the UFM1-ligase E3 enzyme UFL1. This post-translational modification on lysine residues of proteins may play a crucial role in a number of cellular processes. TRIP4 ufmylation may for instance play a role in nuclear receptors-mediated transcription. Other substrates may include DDRGK1 with which it may play a role in the cellular response to endoplasmic reticulum stress (Probable).

Gene ID:

UFM1

Uniprot

P61960

Synonyms:

Ubiquitin-fold modifier 1, UFM1, C13orf20

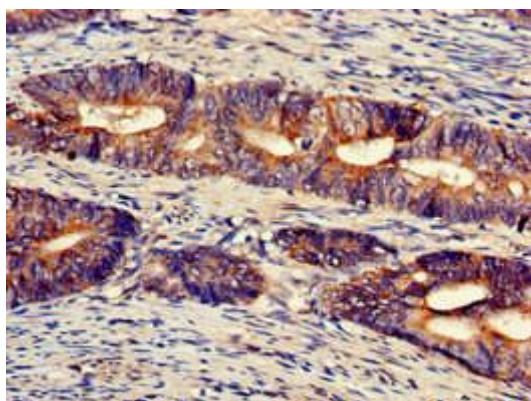
Immunogen:

Recombinant Human Ubiquitin-fold modifier 1 protein (11-63AA).

Storage:

Preservative: 0.03% Proclin 300. Constituents: 50% Glycerol, 0.01M PBS, pH 7.4

Product Images



Immunohistochemistry of paraffin-embedded human colon cancer using PACO50086 at dilution of 1:100.