

SPRY2 Antibody



PACO50038

Product Information

Size:

50ug

Reactivity:

Human, Mouse

Source:

Rabbit

Isotype:

IgG

Applications:

ELISA, WB, IHC, IF

Recommended dilutions:

ELISA:1:2000-1:10000, WB:1:500-1:5000,
IHC:1:20-1:200, IF:1:50-1:200

Protein Background:

May function as an antagonist of fibroblast growth factor (FGF) pathways and may negatively modulate respiratory organogenesis.

Gene ID:

SPRY2

Uniprot

Q7Z783

Synonyms:

Protein sprouty homolog 2 (Spry-2), SPRY2

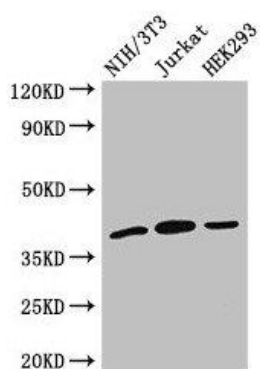
Immunogen:

Recombinant Human SPRY2 protein (2-97AA).

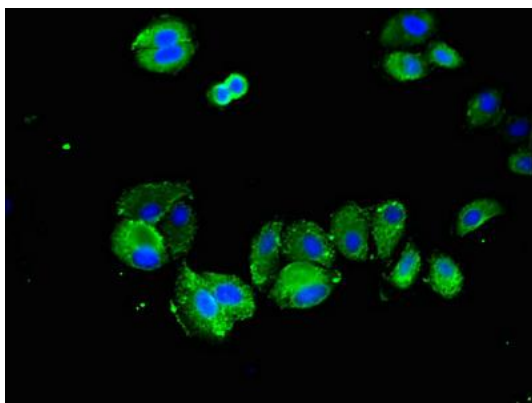
Storage:

Preservative: 0.03% Proclin 300. Constituents: 50% Glycerol, 0.01M PBS, pH 7.4

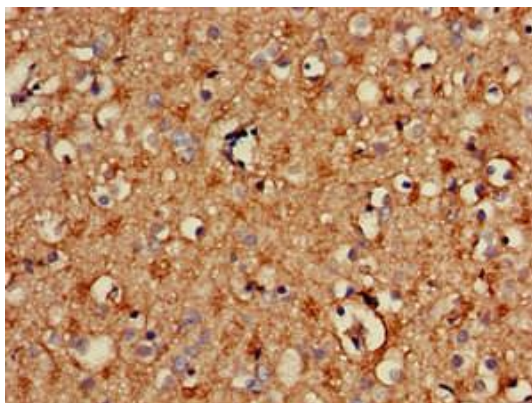
Product Images



Western Blot. Positive WB detected in: NIH/3T3 whole cell lysate, Jurkat whole cell lysate, HEK293 whole cell lysate. All lanes: SPRY2 antibody at 2.7 μ g/ml. Secondary. Goat polyclonal to rabbit IgG at 1/50000 dilution. Predicted band size: 40 kDa. Observed band size: 40 kDa.



Immunofluorescent analysis of HepG2 cells using PACO50038 at dilution of 1:100 and Alexa Fluor 488-conjugated AffiniPure Goat Anti-Rabbit IgG(H+L).



Immunohistochemistry of paraffin-embedded human brain tissue using PACO50038 at dilution of 1:100.