

PACO50034

Product Information

Size:

50ug

Reactivity:

Human

Source:

Rabbit

Isotype:

IgG

Applications:

ELISA, IHC, IF

Recommended dilutions:

ELISA:1:2000-1:10000, IHC:1:20-1:200,
IF:1:50-1:200

Protein Background:

Cross-linked envelope protein of keratinocytes. It is a keratinocyte protein that first appears in the cell cytosol, but ultimately becomes cross-linked to membrane proteins by transglutaminase. All that results in the formation of an insoluble envelope beneath the plasma membrane.

Gene ID:

SPRR1A

Uniprot

P35321

Synonyms:

Cornifin-A (19 kDa pancornulin) (SPRK) (Small proline-rich protein IA) (SPR-IA), SPRR1A

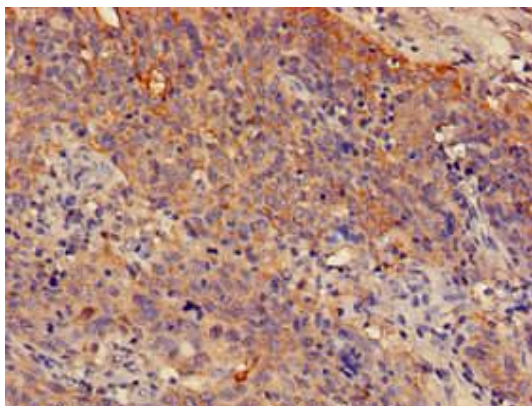
Immunogen:

Recombinant Human Cornifin-A protein (8-72AA).

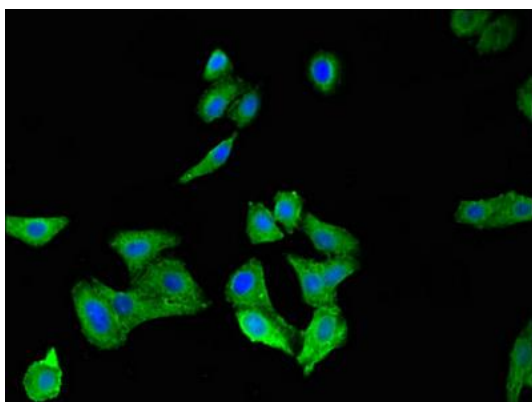
Storage:

Preservative: 0.03% Proclin 300. Constituents: 50% Glycerol, 0.01M PBS, pH 7.4

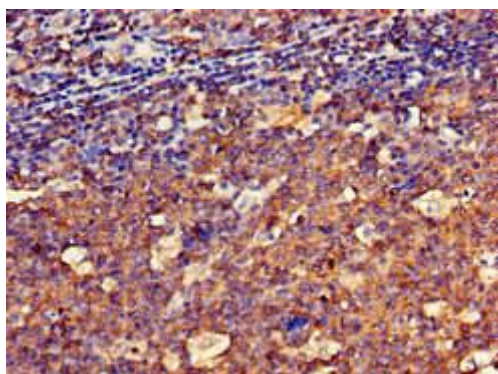
Product Images



Immunohistochemistry of paraffin-embedded human cervical cancer using PACO50034 at dilution of 1:100.



Immunofluorescent analysis of HepG2 cells using PACO50034 at dilution of 1:100 and Alexa Fluor 488-conjugated AffiniPure Goat Anti-Rabbit IgG(H+L).



Immunohistochemistry of paraffin-embedded human tonsil tissue using PACO50034 at dilution of 1:100.