

PACO50022

---

## Product Information

**Size:**

50ug

**Reactivity:**

Human, Mouse

**Source:**

Rabbit

**Isotype:**

IgG

**Applications:**

ELISA, WB, IHC, IF

**Recommended dilutions:**

ELISA:1:2000-1:10000, WB:1:500-1:5000,  
IHC:1:20-1:200, IF:1:50-1:200

**Protein Background:**

Participates in the second catalytic step of pre-mRNA splicing, when the free hydroxyl group of exon I attacks the 3'-splice site to generate spliced mRNA and the excised lariat intron. Required for holding exon 1 properly in the spliceosome and for correct AG identification when more than one possible AG exists in 3'-splicing site region. May be involved in the activation of proximal AG. Probably also involved in alternative splicing regulation.

**Gene ID:**

SLU7

**Uniprot**

O95391

**Synonyms:**

Pre-mRNA-splicing factor SLU7 (hSlu7), SLU7

**Immunogen:**

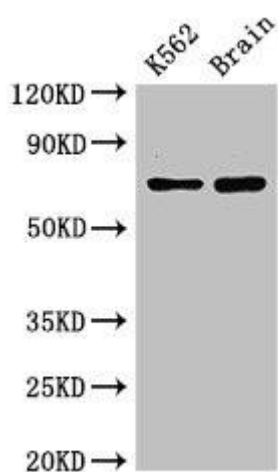
Recombinant Human Pre-mRNA-splicing factor SLU7 protein (138-310AA).

**Storage:**

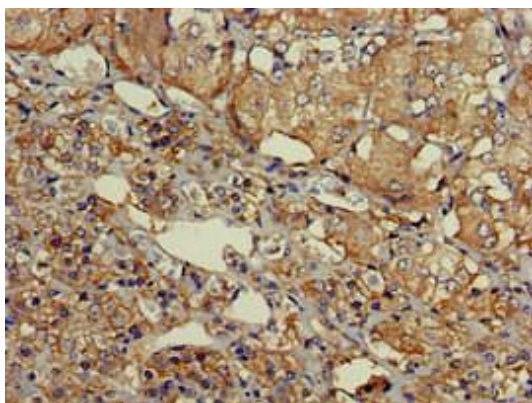
Preservative: 0.03% Proclin 300. Constituents: 50% Glycerol, 0.01M PBS, pH 7.4

## Product Images

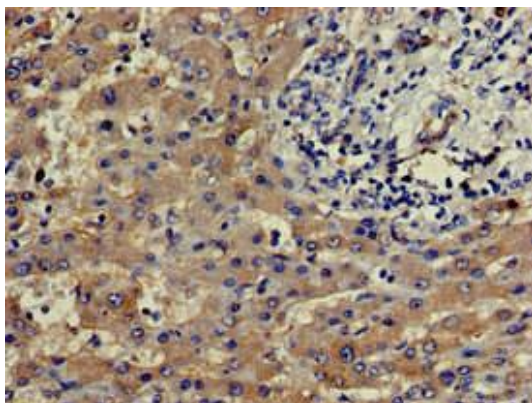
---



Western Blot. Positive WB detected in: K562 whole cell lysate, Mouse brain tissue. All lanes: SLU7 antibody at 3 $\mu$ g/ml. Secondary. Goat polyclonal to rabbit IgG at 1/50000 dilution. Predicted band size: 69 kDa. Observed band size: 69 kDa.



Immunohistochemistry of paraffin-embedded human adrenal gland tissue using PACO50022 at dilution of 1:100.



Immunohistochemistry of paraffin-embedded human liver cancer using PACO50022 at dilution of 1:100.