

PACO50002

---

## Product Information

**Size:**

50ug

**Reactivity:**

Human, Mouse, Rat

**Source:**

Rabbit

**Isotype:**

IgG

**Applications:**

ELISA, WB, IHC, IF

**Recommended dilutions:**

ELISA:1:2000-1:10000, WB:1:500-1:5000,  
IHC:1:20-1:200, IF:1:50-1:200

**Protein Background:**

May have regulatory role in cell division or differentiation in response to extracellular signals.

**Gene ID:**

SKIL

**Uniprot**

P12757

**Synonyms:**

Ski-like protein (Ski-related oncogene) (Ski-related protein), SKIL, SNO

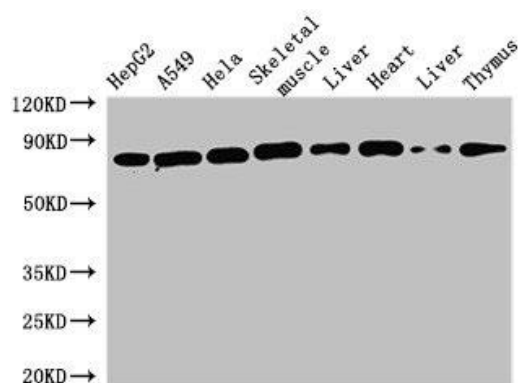
**Immunogen:**

Recombinant Human Ski-like protein (359-579AA).

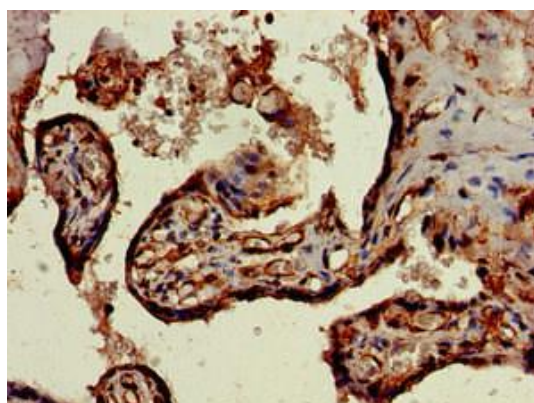
**Storage:**

Preservative: 0.03% Proclin 300. Constituents: 50% Glycerol, 0.01M PBS, pH 7.4

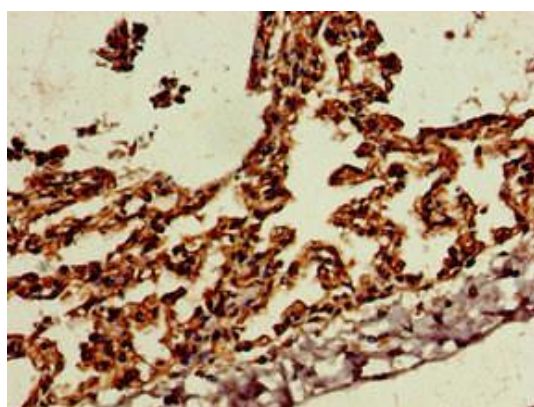
## Product Images



Western Blot. Positive WB detected in: HepG2 whole cell lysate, A549 whole cell lysate, HeLa whole cell lysate, Mouse skeletal muscle tissue, Mouse liver tissue, Rat heart tissue, Rat liver tissue, Rat thymus tissue. All lanes: SKIL antibody at 1.6 $\mu$ g/ml. Secondary. Goat polyclonal to rabbit IgG at 1/50000 dilution. Predicted band size: 77, 47, 72, 45, 75 kDa. Observed band size: 77 kDa.



Immunohistochemistry of paraffin-embedded human placenta tissue using PACO50002 at dilution of 1:100.



Immunohistochemistry of paraffin-embedded human lung tissue using PACO50002 at dilution of 1:100.